

LEA Name : York Suburban SD  
Address : 1800 Hollywood Dr  
York , PA 17403

County : York  
AUN Number : 112679403  
LEA Type : SD

**Annual Financial Report  
Accuracy Certification Statement**

For Fiscal Year Ending  
**6/30/2024**

Pennsylvania Department of Education  
&  
Office of Comptroller Operations

PDE-2056: Intermediate Unit  
PDE-2057: School District, AVTS/CTC, Charter School,  
and Special Program Jointure

**CERTIFICATION: By signing this page I agree that the electronic data submitted is a complete and accurate statement of the financial operations and status of the local education agency for the fiscal year. It has been prepared in accordance with generally accepted accounting principles and established Commonwealth of PA reporting guidelines.**

\_\_\_\_\_  
Chief School Administrator Signature

\_\_\_\_\_  
Date

\_\_\_\_\_  
Board Secretary Signature

\_\_\_\_\_  
Date

Michelle Kendig  
\_\_\_\_\_  
Contact Person

(717)885-1124      Ext :  
\_\_\_\_\_  
Contact Person Telephone Number

mkendig@yssd.org  
\_\_\_\_\_  
Contact Person E-mail Address

\_\_\_\_\_  
Contact Person Fax Number

**Audit Certification**  
**Annual Financial Report:**  
For Fiscal Year Ending **6/30/2024**  
**(Pursuant to PA School Code Section 218(b))**

LEA Name : York Suburban SD  
AUN Number : 112679403  
County : York

<b>Audit Certification Due:</b> 12/31/2024
---

---

**This certification is applicable to the Annual Financial Report data submitted through the Consolidated Financial Reporting System (CFRS).**

CERTIFICATION: By signing this page I agree that the financial statements of the school have been properly audited as noted above pursuant to Article XXIV, and in the auditor's professional opinion, the Annual Financial Report (PDE-2057) submitted through CFRS is materially consistent with the audited financial statements.

**Chief School Administrator**

**Board Secretary**

\_\_\_\_\_  
Signature

\_\_\_\_\_  
Date

\_\_\_\_\_  
Signature

\_\_\_\_\_  
Date

Michelle Kendig

\_\_\_\_\_  
Contact Person

mkendig@yssd.org

\_\_\_\_\_  
Contact Person E-mail Address

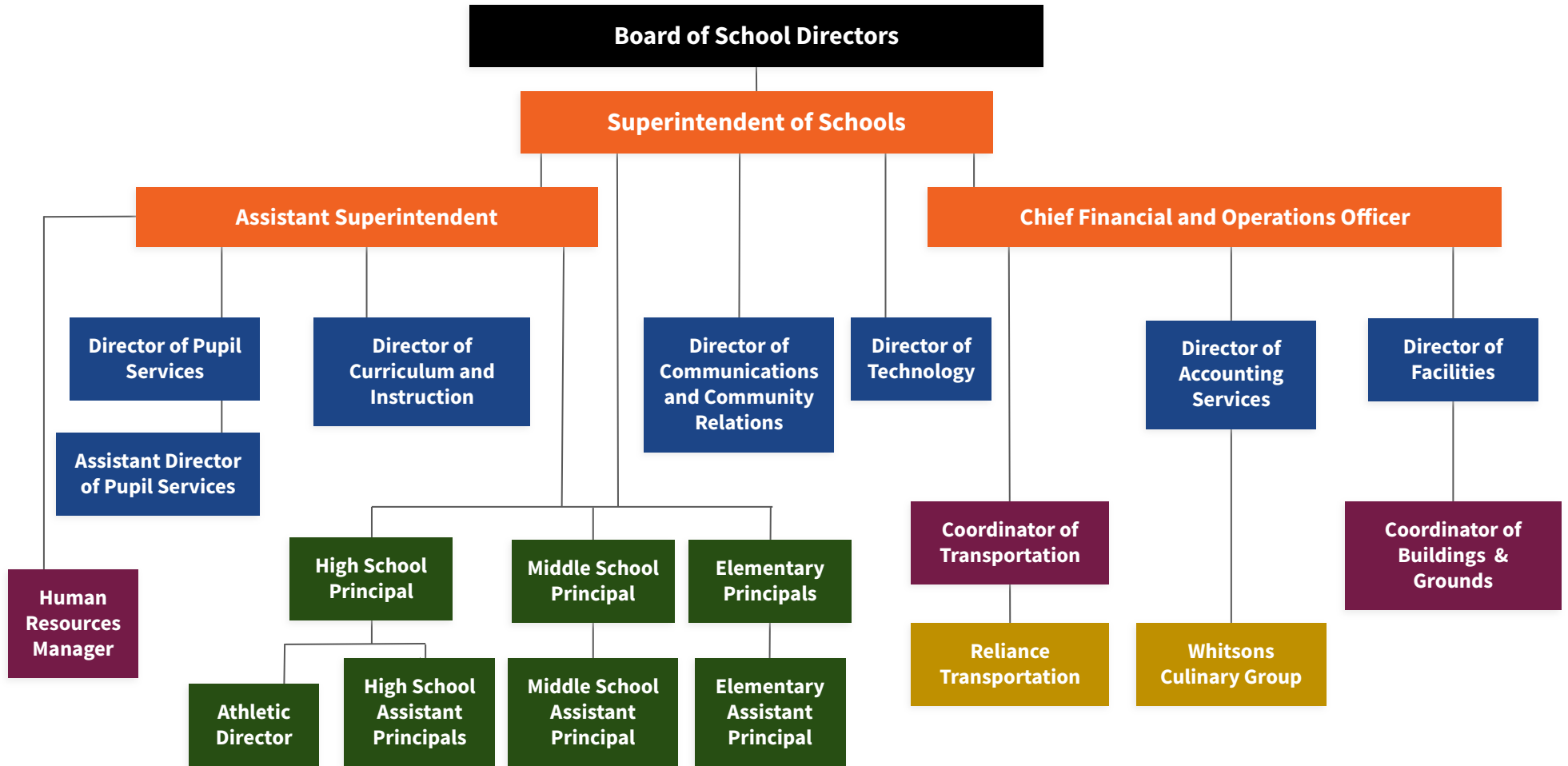
(717)885-1124      Ext :

\_\_\_\_\_  
Contact Person Telephone Number

\_\_\_\_\_  
Contact Person Fax Number



Last Updated September 2024



- Executive Cabinet Level Administration
- Cabinet Level Administration
- Building Level Administration
- Managers & Coordinators
- Contracted Services



Book	Policy Manual
Section	600 Finances
Title	GASB Statement 34
Code	622
Status	Active
Adopted	March 16, 2015

### **Purpose**

The Board recognizes the need to implement the required accounting and financial reporting standards stipulated by the Pennsylvania Department of Education.

The primary objectives of implementing the Governmental Accounting Standards Board (GASB) Statement 34 are to assure compliance with state requirements, and properly account for both the financial and economic resources of the District.

### **Authority**

Participation of the District in any such activity shall be in accordance with Board policy. [\[1\]](#)[\[2\]](#)

### **Delegation of Responsibility**

The responsibility to coordinate the compilation and preparation of all information necessary to implement this policy is delegated to the Director of Finance.

The designated individual shall be responsible for implementing the necessary procedures to establish and maintain a fixed asset inventory, including depreciation schedules. Depreciation shall be computed on a straight-line basis over the useful lives of the assets. Normal maintenance and repairs shall be charged to expense as incurred; major renewals and betterments that materially extend the life or increase the value of the asset shall be capitalized. A schedule of accumulated depreciation shall be consistent from year to year.

The Director of Finance shall prepare the required Management Discussion and Analysis (MD&A). The MD&A shall be in the form required by GASB Statement 34 and shall be submitted to the Board for approval, prior to publication.

Prior to submission of the MD&A for Board approval, the District's independent auditors shall review the MD&A, in accordance with SAS No. 52, "Required Supplementary Information".

### **Guidelines**

In order to associate debt with acquired assets and to avoid net asset deficits, any asset that has been acquired with debt proceeds shall be capitalized, regardless of the cost of the asset.

Any other asset not acquired by debt proceeds shall be capitalized if that acquisition cost is at least \$1500 and its useful life is at least one (1) year.

Legal

[1. 24 P.S. 218](#)

[2. 24 P.S. 613](#)

Governmental Accounting Standards Board, Statement No. 34

Val Number

Description

Justification

10150 NAG: Balance Sheet Govt Funds:Data has been entered for Fund 32, Line 0400 - Due to Other Funds. Since transfers out of Fund 32 are not allowed, this line should only be utilized when recording transactions related to interfund reimbursements. Please make corrections or provide a brief explanation of the interfund reimbursement which includes confirmation that the associated expenditure(s) has also been properly reported in Fund 32.

This is an inter-fund correction reimbursement. Funds were paid out of fund 39, which should have been paid out of fund 32. This was not found until after the fiscal year's end. This represents the funds due back to fund 39.

NAG Fund 32, Line 0400: \$13,800.00

12195 REG: Current Year AFR Beginning Fund Balance must equal Prior Year AFR Ending Fund Balance. Justifications to this error must fully explain the situation that prompted a fund balance restatement. "Auditor Adjustment" is not a sufficient justification.

AFR was submitted before the completion of the audit and the prior Business Administrator did not go back and correct the AFR. The \$13,749,547 matches the 2022/23 ending fund balances on our published audited statements which is why it is different.

Total Govt Funds, Beg Bal: \$26,543,139.00  
PY Ending Bal, Govt Funds: \$26,548,400.00

12196 REG - Fund 10: Current Year AFR Beginning Fund Balance must equal Prior Year AFR Ending Fund Balance. Justifications to this error must fully explain the situation that prompted a fund balance restatement. "Auditor Adjustment" is not a sufficient justification.

AFR was submitted before the completion of the audit and the prior Business Administrator did not go back and correct the AFR. The \$13,749,547 matches the 2022/23 ending fund balances on our published audited statements which is why it is different.

REG Fund 10, Beg Fund Bal: \$13,749,547.00  
PY Ending Fund Balance: \$13,754,808.00

30501 Revenue Detail: AFR amount must equal PDE FAI system amount.

To 8/31/23 Transportation Subsidy Payment for the prior year

7311, AFR Rev Detail: \$636,474.32  
7311, PDE FAI System: \$631,213.00

40347 Expenditure Detail - Fund 10: A negative amount has been reported in 5130-880, please make corrections or provide a justification.

Adj JE to Reconcile for 23/24

41005 Expenditures have been reported in Function 1700 – Higher Education Programs for Secondary Students. Please confirm that these costs were for services provided to your school's secondary students. NOTE: Adult education programs and Community College sponsorship should be coded to Function 1600.

Dual Enrollment Expenditures

Exp detail, Fund 10, Function 1700 total \$26,048.18

41150 Expenditure Detail - There is an entry in account 5150-990 which should only include bond discounts. Please verify that only bond discounts are being reported within this code. Note: Underwriter's discounts are not bond discounts and should be recorded as a current expenditure in account 2390-810.

This was for the 2024 Bond Proceeds

Expenditure 5150-990, Fund 40: \$161,383.55



Amounts Expressed in Whole Dollars	<u>General Fund</u> <u>(10)</u>	<u>Student Sponsored</u> <u>Activity Fund</u> <u>(21)</u>	<u>Public Purpose Trust</u> <u>(27)</u>	<u>Other Compt Approved</u> <u>(28)</u>	<u>Athletic / Activity</u> <u>(29)</u>
<b>Assets And Deferred Outflows Of Resources</b>					
<b>Assets</b>					
0100 Cash and Cash Equivalents	21,352,842	59,103			
0110 Investments	102,886	33,170			
0120 Taxes Receivable	1,081,066				
0130 Due From Other Funds	53,000				
0141 Due From Other Governments					
0142 State Revenue Receivable	2,178,939				
0143 Federal Revenue Receivable	535,970				
0145 Other Intergovernmental Revenue Receivable					
0146 Due from Primary Government					
0147 Due from Component Unit					
0150 Other Receivables	228,316				
0170 Inventories					
0180 Prepaid Expenses (Expenditures)					
0190 Other Current Assets					
<b>Total Assets</b>	<b>\$25,533,019</b>	<b>\$92,273</b>			
0910 Deferred Outflows of Resources					
<b>Total Assets And Deferred Outflows Of Resources</b>	<b>\$25,533,019</b>	<b>\$92,273</b>			



Amounts Expressed in Whole Dollars	<u>Capital Reserve (690.</u> <u>1850)</u> <u>(31)</u>	<u>Capital Reserve (1431)</u> <u>(32)</u>	<u>Other Capital Projects</u> <u>Fund</u> <u>(39)</u>	<u>Debt Service</u> <u>(40)</u>	<u>Permanent</u> <u>(90)</u>
<b>Assets And Deferred Outflows Of Resources</b>					
<b>Assets</b>					
0100 Cash and Cash Equivalents		2,927,282	8,099,714	21,505,217	
0110 Investments					
0120 Taxes Receivable					
0130 Due From Other Funds		300,000	13,800	200,000	
0141 Due From Other Governments					
0142 State Revenue Receivable					
0143 Federal Revenue Receivable					
0145 Other Intergovernmental Revenue Receivable					
0146 Due from Primary Government					
0147 Due from Component Unit					
0150 Other Receivables					
0170 Inventories					
0180 Prepaid Expenses (Expenditures)					
0190 Other Current Assets					
<b>Total Assets</b>		<b>\$3,227,282</b>	<b>\$8,113,514</b>	<b>\$21,705,217</b>	
0910 Deferred Outflows of Resources					
<b>Total Assets And Deferred Outflows Of Resources</b>		<b>\$3,227,282</b>	<b>\$8,113,514</b>	<b>\$21,705,217</b>	

Amounts Expressed in Whole Dollars

**Total Governmental Funds**

**Assets And Deferred Outflows Of Resources**

<b>Assets</b>	
0100 Cash and Cash Equivalents	53,944,158
0110 Investments	136,056
0120 Taxes Receivable	1,081,066
0130 Due From Other Funds	566,800
0141 Due From Other Governments	
0142 State Revenue Receivable	2,178,939
0143 Federal Revenue Receivable	535,970
0145 Other Intergovernmental Revenue Receivable	
0146 Due from Primary Government	
0147 Due from Component Unit	
0150 Other Receivables	228,316
0170 Inventories	
0180 Prepaid Expenses (Expenditures)	
0190 Other Current Assets	
<b>Total Assets</b>	<b>\$58,671,305</b>
0910 Deferred Outflows of Resources	
<b>Total Assets And Deferred Outflows Of Resources</b>	<b>\$58,671,305</b>

Amounts Expressed in Whole Dollars

	<u>General Fund</u> <u>(10)</u>	<u>Student Sponsored</u> <u>Activity Fund</u> <u>(21)</u>	<u>Public Purpose Trust</u> <u>(27)</u>	<u>Other Compt Approved</u> <u>(28)</u>	<u>Athletic / Activity</u> <u>(29)</u>
<b>Liabilities And Deferred Inflows Of Resources And Fund Balances</b>					
<b>Liabilities</b>					
0400 Due to Other Funds	300,000				
0411 Due to Other Governments					
0412 Due to Primary Government					
0413 Due to Component Unit					
0420 Accounts Payable	644,568	159			
0430 Contracts Payable	(2,235)				
0440 Current Portion of Long-Term Debt					
0450 Short-Term Payables					
0461 Accrued Salaries and Benefits	4,962,526				
0462 Payroll Deductions and Withholding	5,196,555				
0480 Unearned Revenues	10,000				
0490 Other Current Liabilities					
<b>Total Liabilities</b>	<b>\$11,111,414</b>	<b>\$159</b>			
0950 Deferred Inflows of Resources					
<b>Fund Balances</b>					
0810 Nonspendable Fund Balance					
0820 Restricted Fund Balance					
0830 Committed Fund Balance					
0840 Assigned Fund Balance	10,342,432	92,114			
0850 Unassigned Fund Balance	4,079,173				
<b>Total Fund Balances</b>	<b>\$14,421,605</b>	<b>\$92,114</b>			
<b>Total Liabilities, Deferred Inflows Of Resources And Fund Balances</b>	<b>\$25,533,019</b>	<b>\$92,273</b>			

Amounts Expressed in Whole Dollars

	<u>Capital Reserve (690.</u> <u>1850)</u> <u>(31)</u>	<u>Capital Reserve (1431)</u> <u>(32)</u>	<u>Other Capital Projects</u> <u>Fund</u> <u>(39)</u>	<u>Debt Service</u> <u>(40)</u>	<u>Permanent</u> <u>(90)</u>
<b>Liabilities And Deferred Inflows Of Resources And Fund Balances</b>					
<b>Liabilities</b>					
0400 Due to Other Funds		13,800	253,000		
0411 Due to Other Governments					
0412 Due to Primary Government					
0413 Due to Component Unit					
0420 Accounts Payable			1,087,735		
0430 Contracts Payable					
0440 Current Portion of Long-Term Debt					
0450 Short-Term Payables					
0461 Accrued Salaries and Benefits					
0462 Payroll Deductions and Withholding					
0480 Unearned Revenues					
0490 Other Current Liabilities					
<b>Total Liabilities</b>		<b>\$13,800</b>	<b>\$1,340,735</b>		
0950 Deferred Inflows of Resources					
<b>Fund Balances</b>					
0810 Nonspendable Fund Balance					
0820 Restricted Fund Balance		2,280,547	8,465,088	21,705,217	
0830 Committed Fund Balance		932,935			
0840 Assigned Fund Balance					
0850 Unassigned Fund Balance			(1,692,309)		
<b>Total Fund Balances</b>		<b>\$3,213,482</b>	<b>\$6,772,779</b>	<b>\$21,705,217</b>	
<b>Total Liabilities, Deferred Inflows Of Resources And Fund Balances</b>		<b>\$3,227,282</b>	<b>\$8,113,514</b>	<b>\$21,705,217</b>	

Amounts Expressed in Whole Dollars

**Total Governmental Funds**

**Liabilities And Deferred Inflows Of Resources And Fund Balances**

**Liabilities**

0400 Due to Other Funds	566,800
0411 Due to Other Governments	
0412 Due to Primary Government	
0413 Due to Component Unit	
0420 Accounts Payable	1,732,462
0430 Contracts Payable	(2,235)
0440 Current Portion of Long-Term Debt	
0450 Short-Term Payables	
0461 Accrued Salaries and Benefits	4,962,526
0462 Payroll Deductions and Withholding	5,196,555
0480 Unearned Revenues	10,000
0490 Other Current Liabilities	

**Total Liabilities \$12,466,108**

0950 Deferred Inflows of Resources

**Fund Balances**

0810 Nonspendable Fund Balance	
0820 Restricted Fund Balance	32,450,852
0830 Committed Fund Balance	932,935
0840 Assigned Fund Balance	10,434,546
0850 Unassigned Fund Balance	2,386,864

**Total Fund Balances \$46,205,197**

**Total Liabilities, Deferred Inflows Of Resources And Fund Balances \$58,671,305**

Amounts Expressed in Whole Dollars	<u>General Fund</u> <u>(10)</u>	<u>Student Sponsored</u> <u>Activity Fund</u> <u>(21)</u>	<u>Public Purpose Trust</u> <u>(27)</u>	<u>Other Compt Approved</u> <u>(28)</u>	<u>Athletic / Activity</u> <u>(29)</u>
<b>Revenues</b>					
6000 Revenue from Local Sources	54,028,631	94,399			
7000 Revenue from State Sources	15,430,398				
8000 Revenue from Federal Sources	1,517,446				
<b>Total Revenues</b>	<b>\$70,976,475</b>	<b>\$94,399</b>			
<b>Expenditures</b>					
1000 Instruction	44,210,520				
2000 Support Services	18,434,497				
3000 Operation of Non-Instructional Services	1,160,633	89,349			
4000 Facilities Acquisition, Construction and Improvement Services					
5110 Debt Service					
5130 Refund of Prior Year Revenues / Receipts	(1,984)				
5140 Leases and Other Right-to-Use Arrangements					
<b>Total Expenditures</b>	<b>\$63,803,666</b>	<b>\$89,349</b>			
<b>Excess (Deficiency) Of Revenues Over Expenditures</b>	<b>\$7,172,809</b>	<b>\$5,050</b>			
<b>Other Financing Sources (Uses)</b>					
9110 Face Value of Bonds Issued					
9120 Proceeds from Refunding of Bonds					
9130 Bond Premiums					
9200 Proceeds from Extended Term Financing, Leases, and Other Right-to-Use Arrangements					
9300 Interfund Transfers - IN					
9400 Sale of or Compensation for Loss of Fixed Assets	40				
9710 Transfers from Component Units					
9720 Transfers from Primary Governments					
9910 Other Financing Sources Not Listed in the 9000 Series					
9990 Insurance Recoveries					
5120 Debt Service – Refunded Bonds					
5150 Bond Discounts					
5200 Interfund Transfers – Out	6,500,791				
5300 Transfers Out to Component Units/Primary Governments					
<b>Total Other Financing Sources (Uses)</b>	<b>(\$6,500,751)</b>				

Amounts Expressed in Whole Dollars	<u>Capital Reserve (690.1850)</u> <u>(31)</u>	<u>Capital Reserve (1431)</u> <u>(32)</u>	<u>Other Capital Projects</u> <u>Fund</u> <u>(39)</u>	<u>Debt Service</u> <u>(40)</u>	<u>Permanent</u> <u>(90)</u>
<b>Revenues</b>					
6000 Revenue from Local Sources		3,515	202,772	468,899	
7000 Revenue from State Sources					
8000 Revenue from Federal Sources					
<b>Total Revenues</b>		<b>\$3,515</b>	<b>\$202,772</b>	<b>\$468,899</b>	
<b>Expenditures</b>					
1000 Instruction					
2000 Support Services			182,707	265,247	
3000 Operation of Non-Instructional Services					
4000 Facilities Acquisition, Construction and Improvement Services		13,800	2,294,714		
5110 Debt Service				5,257,948	
5130 Refund of Prior Year Revenues / Receipts					
5140 Leases and Other Right-to-Use Arrangements					
<b>Total Expenditures</b>		<b>\$13,800</b>	<b>\$2,477,421</b>	<b>\$5,523,195</b>	
<b>Excess (Deficiency) Of Revenues Over Expenditures</b>		<b>(\$10,285)</b>	<b>(\$2,274,649)</b>	<b>(\$5,054,296)</b>	
<b>Other Financing Sources (Uses)</b>					
9110 Face Value of Bonds Issued				19,475,000	
9120 Proceeds from Refunding of Bonds					
9130 Bond Premiums				517,282	
9200 Proceeds from Extended Term Financing, Leases, and Other Right-to-Use Arrangements					
9300 Interfund Transfers - IN		300,000		6,193,281	
9400 Sale of or Compensation for Loss of Fixed Assets					
9710 Transfers from Component Units					
9720 Transfers from Primary Governments					
9910 Other Financing Sources Not Listed in the 9000 Series					
9990 Insurance Recoveries					
5120 Debt Service – Refunded Bonds					
5150 Bond Discounts				161,384	
5200 Interfund Transfers – Out					
5300 Transfers Out to Component Units/Primary Governments					
<b>Total Other Financing Sources (Uses)</b>		<b>\$300,000</b>		<b>\$26,024,179</b>	

Amounts Expressed in Whole Dollars	<u>Total Governmental Funds</u>
<b>Revenues</b>	
6000 Revenue from Local Sources	54,798,216
7000 Revenue from State Sources	15,430,398
8000 Revenue from Federal Sources	1,517,446
<b>Total Revenues</b>	<b>\$71,746,060</b>
<b>Expenditures</b>	
1000 Instruction	44,210,520
2000 Support Services	18,882,451
3000 Operation of Non-Instructional Services	1,249,982
4000 Facilities Acquisition, Construction and Improvement Services	2,308,514
5110 Debt Service	5,257,948
5130 Refund of Prior Year Revenues / Receipts	(1,984)
5140 Leases and Other Right-to-Use Arrangements	
<b>Total Expenditures</b>	<b>\$71,907,431</b>
<b>Excess (Deficiency) Of Revenues Over Expenditures</b>	<b>(\$161,371)</b>
<b>Other Financing Sources (Uses)</b>	
9110 Face Value of Bonds Issued	19,475,000
9120 Proceeds from Refunding of Bonds	
9130 Bond Premiums	517,282
9200 Proceeds from Extended Term Financing, Leases, and Other Right-to-Use Arrangements	
9300 Interfund Transfers - IN	6,493,281
9400 Sale of or Compensation for Loss of Fixed Assets	40
9710 Transfers from Component Units	
9720 Transfers from Primary Governments	
9910 Other Financing Sources Not Listed in the 9000 Series	
9990 Insurance Recoveries	
5120 Debt Service – Refunded Bonds	
5150 Bond Discounts	161,384
5200 Interfund Transfers – Out	6,500,791
5300 Transfers Out to Component Units/Primary Governments	
<b>Total Other Financing Sources (Uses)</b>	<b>\$19,823,428</b>



Amounts Expressed in Whole Dollars	<u>General Fund</u> <u>(10)</u>	<u>Student Sponsored</u> <u>Activity Fund</u> <u>(21)</u>	<u>Public Purpose Trust</u> <u>(27)</u>	<u>Other Compt Approved</u> <u>(28)</u>	<u>Athletic / Activity</u> <u>(29)</u>
<b>Special And Extraordinary Items</b>					
9920 Special Items – Gains					
9930 Extraordinary Items – Gains					
5520 Special Items – Losses					
5530 Extraordinary Items – Losses					
<b>Net Change In Fund Balances</b>	<b>\$672,058</b>	<b>\$5,050</b>			
<b>Fund Balance</b>					
0001 Fund Balance - Beginning of Fiscal Year	13,749,547	87,065			
<b>Fund Balance - End Of Year</b>	<b>\$14,421,605</b>	<b>\$92,115</b>			

Amounts Expressed in Whole Dollars	<u>Capital Reserve (690.</u> <u>1850)</u> <u>(31)</u>	<u>Capital Reserve (1431)</u> <u>(32)</u>	<u>Other Capital Projects</u> <u>Fund</u> <u>(39)</u>	<u>Debt Service</u> <u>(40)</u>	<u>Permanent</u> <u>(90)</u>
<b>Special And Extraordinary Items</b>					
9920 Special Items – Gains					
9930 Extraordinary Items – Gains					
5520 Special Items – Losses					
5530 Extraordinary Items – Losses					
<b>Net Change In Fund Balances</b>		<b>\$289,715</b>	<b>(\$2,274,649)</b>	<b>\$20,969,883</b>	
<b>Fund Balance</b>					
0001 Fund Balance - Beginning of Fiscal Year		2,923,766	9,047,428	735,333	
<b>Fund Balance - End Of Year</b>		<b>\$3,213,481</b>	<b>\$6,772,779</b>	<b>\$21,705,216</b>	

Amounts Expressed in Whole Dollars	<u>Total Governmental Funds</u>
<b>Special And Extraordinary Items</b>	
9920 Special Items – Gains	
9930 Extraordinary Items – Gains	
5520 Special Items – Losses	
5530 Extraordinary Items – Losses	
<b>Net Change In Fund Balances</b>	<b>\$19,662,057</b>
<b>Fund Balance</b>	
0001 Fund Balance - Beginning of Fiscal Year	26,543,139
<b>Fund Balance - End Of Year</b>	<b>\$46,205,196</b>

Amounts Expressed in Whole Dollars	<u>Food Service</u> <u>(51)</u>	<u>Child Care</u> <u>Operations</u> <u>(52)</u>	<u>Other Enterprise</u> <u>(58)</u>	<u>TOTAL</u>	<u>Internal Service</u> <u>(60)</u>
<b>Assets And Deferred Outflows Of Resources</b>					
<b>Current Assets</b>					
0100 Cash and Cash Equivalents	2,525,444			2,525,444	1,568,030
0110 Investments					
0130 Due From Other Funds					
0141 Due From Other Governments					
0142 State Revenue Receivable	31,148			31,148	
0143 Federal Revenue Receivable	124,855			124,855	
0146 Due from Primary Government					
0147 Due from Component Unit					
0150 Other Receivables	14,070			14,070	66,285
0170 Inventories	47,804			47,804	
0180 Prepaid Expenses (Expenditures)					
0190 Other Current Assets					
<b>Total Current Assets</b>	<b>\$2,743,321</b>			<b>\$2,743,321</b>	<b>\$1,634,315</b>
<b>Noncurrent Assets</b>					
0211 Land					
0212 Site Improvements (Net)					
0220 Buildings and Building Improvements (Net)					
0230 Tangible Property and Intangible Right-To-Use Assets (Net)	298,501			298,501	
0250 Construction in Progress					
0260 Long Term Prepayments					
0290 Other Noncurrent Assets					
<b>Total Noncurrent Assets</b>	<b>\$298,501</b>			<b>\$298,501</b>	
0910 Deferred Outflows of Resources					
<b>Total Assets And Deferred Outflows Of Resources</b>	<b>\$3,041,822</b>			<b>\$3,041,822</b>	<b>\$1,634,315</b>

Amounts Expressed in Whole Dollars	<u>Food Service</u> <u>(51)</u>	<u>Child Care</u> <u>Operations</u> <u>(52)</u>	<u>Other Enterprise</u> <u>(58)</u>	<u>TOTAL</u>	<u>Internal Service</u> <u>(60)</u>
<b>Liabilities And Deferred Inflows Of Resources And Net Position</b>					
<b>Current Liabilities</b>					
0400 Due to Other Funds					
0411 Due to Other Governments					
0413 Due to Component Unit					
0420 Accounts Payable	664,908			664,908	957,160
0430 Contracts Payable					
0440 Current Portion of Long-Term Debt					
0450 Short-Term Payables					
0461 Accrued Salaries and Benefits					
0462 Payroll Deductions and Withholding					
0480 Unearned Revenues					
0490 Other Current Liabilities	17,938			17,938	
<b>Total Current Liabilities</b>	<b>\$682,846</b>			<b>\$682,846</b>	<b>\$957,160</b>
<b>Noncurrent Liabilities</b>					
0510 Bonds Payable					
0520 Extended-Term Financing Agreements Payable					
0530 Lease and Other Right-To-Use Obligations					
0540 Accumulated Compensated Absences					
0550 Authority Lease Obligations					
0560 Other Post-Employment Benefits (OPEB)					
0570 Net Pension Liability					
0599 Other Noncurrent Liabilities					
<b>Total Noncurrent Liabilities</b>					
<b>Total Liabilities</b>	<b>\$682,846</b>			<b>\$682,846</b>	<b>\$957,160</b>
0950 Deferred Inflows of Resources					
<b>Net Position</b>					
0791 Net Investment in Capital Assets	298,501			298,501	
0008 Restricted Net Position (0792 – 0798)					
0799 Unrestricted Net Position	2,060,475			2,060,475	677,155
<b>Total Net Position</b>	<b>\$2,358,976</b>			<b>\$2,358,976</b>	<b>\$677,155</b>
<b>Total Liabilities And Deferred Inflows Of Resources And Net Position</b>	<b>\$3,041,822</b>			<b>\$3,041,822</b>	<b>\$1,634,315</b>

Amounts Expressed in Whole Dollars	<u>Food Service</u> <u>(51)</u>	<u>Child Care Operations</u> <u>(52)</u>	<u>Other Enterprise</u> <u>(58)</u>	<u>TOTAL</u>	<u>Internal Service</u> <u>(60)</u>
<b>Operating Revenues</b>					
6600 Food Service Revenue	665,279			665,279	
0071 Charges for Services					5,927,920
0072 Other Operating Revenue					
<b>Total Operating Revenues</b>	<b>\$665,279</b>			<b>\$665,279</b>	<b>\$5,927,920</b>
<b>Operating Expenses</b>					
100 Personnel Services – Salaries					
200 Personnel Services – Employee Benefits					6,279,363
300 Purchased Professional and Technical Services	1,625			1,625	
400 Purchased Property Services					
500 Other Purchased Services	1,871,904			1,871,904	
600 Supplies	278,425			278,425	
740 Depreciation	30,709			30,709	
770 Amortization Expense					
810 Dues and Fees					116,380
880 Refunds of Prior Years' Receipts					
890 Miscellaneous Expenditures					
<b>Total Operating Expenses</b>	<b>\$2,182,663</b>			<b>\$2,182,663</b>	<b>\$6,395,743</b>
<b>Operating Income (Loss)</b>	<b>(\$1,517,384)</b>			<b>(\$1,517,384)</b>	<b>(\$467,823)</b>
<b>Non Operating Revenues (Expenses)</b>					
6500 Earnings on Investments	83,521			83,521	
6830 Federal Revenue from Intermediary Sources					
6920 Contributions and Donations from Private Sources					
6930 Gains or Losses on Sale of Fixed Assets					
6991 Refunds of a Prior Year Expenditure					
7000 Revenue from State Sources	283,195			283,195	
8000 Revenue from Federal Sources	1,356,674			1,356,674	
9990 Insurance Recoveries					
820 Claims and Judgments Against the LEA					
830 Interest					
<b>TOTAL Non Operating Revenues (Expenses)</b>	<b>\$1,723,390</b>			<b>\$1,723,390</b>	
<b>Income (Loss) Before Contributions And Transfers</b>	<b>\$206,006</b>			<b>\$206,006</b>	<b>(\$467,823)</b>

Amounts Expressed in Whole Dollars	<u>Food Service</u> <u>(51)</u>	<u>Child Care Operations</u> <u>(52)</u>	<u>Other Enterprise</u> <u>(58)</u>	<u>TOTAL</u>	<u>Internal Service</u> <u>(60)</u>
<b>Contributions, Transfers, and Special and Extraordinary Items</b>					
5200 Interfund Transfers – Out					
5300 Transfers Out to Component Units/Primary Governments					
5520 Special Items – Losses					
5530 Extraordinary Items – Losses					
9300 Interfund Transfers - IN	7,510			7,510	
9500 Capital Contributions					
9700 Transfers IN From Component Units/Primary Governments					
9920 Special Items – Gains					
9930 Extraordinary Items – Gains					
<b>Change In Net Position</b>	<b>\$213,516</b>			<b>\$213,516</b>	<b>(\$467,823)</b>
0002 Net Position - Beginning of Fiscal Year	2,145,461			2,145,461	1,145,178
0003 Accounting Changes / Residual Equity Transfers					(200)
<b>Net Position - End Of Year</b>	<b>\$2,358,977</b>			<b>\$2,358,977</b>	<b>\$677,155</b>

LEA : 112679403 York Suburban SD

Printed 1/17/2025 11:14:49 AM

Amounts Expressed in Whole Dollars	<u>Food Service</u> <u>(51)</u>	<u>Child Care Operations</u> <u>(52)</u>	<u>Other Enterprise</u> <u>(58)</u>	<u>TOTAL</u>	<u>Internal Service(60)</u>
<b>Cash Flows From Operating Activities</b>					
0011 Cash Receipts From Users	665,279			665,279	5,927,920
0012 Cash Receipts From Assessments Made to Other Funds					
0013 Cash Receipts From Earnings on Investments					
0014 Cash Receipts From Other Operating Revenue					
0015 Cash Payments To Employees For Services					
0016 Cash Payments For Insurance Claims					6,395,743
0017 Cash Payments To Suppliers For Goods and Services	2,182,663			2,182,663	
0018 Cash Payments For Other Operating Expenses					
<b>Net Cash Provided By (Used For) Operating Activities</b>	<b>(\$1,517,384)</b>			<b>(\$1,517,384)</b>	<b>(\$467,823)</b>
<b>Cash Flows From Non-Capital Financing Activities</b>					
0021 Receipts From Local Sources - 6000					
0022 Receipts From State Sources - 7000	283,195			283,195	
0023 Receipts From Federal Sources -8000	1,356,674			1,356,674	
0024 Notes and Loans Received (Repaid)					
0025 Interest Paid on Notes/Loans - 5100-830					
0026 Operating Transfers In (Out)/Residual Equity Trans					
0027 Operating Transfers In (Out) Primary Government / Comp Unit					
0028 Receipts From Refund of Prior Year Expenditures - 6991					
0029 Special and Extraordinary Gains (losses)					
0030 Receipts from Insurance Recoveries -9990					
<b>Net Cash Prov By (Used for) Non-Capital Financing Activities</b>	<b>\$1,639,869</b>			<b>\$1,639,869</b>	
<b>Cash Flows From Capital and Related Financing Activities</b>					
0031 Payments For Fac Acq, Const, and Imp - 4000					
0032 Proceeds from Disposal of Capital Assets					
0033 Proceeds From Extended Term Financing - 9200					
0034 Principal Paid on Financing Agreements					
0035 Interest Paid on Financing Agreements - 5100-830					
0036 (Inc) Dec in Contributed Capital					
<b>Net Cash Prov By (Used for) Capital and Related Financing Activities</b>					
<b>Cash Flows From Investing Activities</b>					
0041 Earnings on Investments - 6500	83,521			83,521	
0042 Purchase of Inv Securities / Deposits to Inv Pools					
0043 Receipts From Investment Pool Withdrawals					
0044 Proceeds from Sale and Maturity of Inv Securities					



LEA : 112679403 York Suburban SD

Printed 1/17/2025 11:14:49 AM

0045 Loans Received (Paid)

<b>Net Cash Prov By (Used for) Investing Activities</b>	<b>\$83,521</b>	<b>\$83,521</b>
---	-----------------	-----------------

	<u>Food Service</u> (51)	<u>Child Care Operations</u> (52)	<u>Other Enterprise</u> (58)	<u>TOTAL</u>	<u>Internal Service</u> (60)
<b>Net Increase (Decrease) in Cash Flows</b>	<b>206,006</b>			<b>206,006</b>	<b>(467,823)</b>
0004 Cash and Cash Equivalents Beginning of Year	1,681,517			1,681,517	391,401
<b>Cash and Cash Equivalents at Year End</b>	<b>\$1,887,523</b>			<b>\$1,887,523</b>	<b>(\$76,422)</b>

**Reconciliation of Operating Income (Loss) To Net Cash Provided by (Used For) Operating Activities**

0005 Operating Income (Loss) per REP	(1,517,384)			(1,517,384)	(467,823)
--------------------------------------	-------------	--	--	-------------	-----------

**Adjustments**

0051 Depreciation and Net Amortization					
0052 Provision for Uncollectible Accounts					
0053 Other Adjustments					(178,072)

**Effect of Changes in Assets, Liabilities, Deferred Outflows and Deferred Inflows**

0054 (Inc) Dec In Accounts Receivable (0120-0150)					(65,561)
0055 Advances to Other Funds					
0056 (Inc) Dec in Inventories (0170)					
0057 (Inc) Dec in Prepaid Expenses (0180)					
0058 (Inc) Dec in Other Current or Noncurrent Assets					
0064 Deferred Outflows (0910)					
0059 Inc (Dec) in Accounts Payable (0400-0450)					243,633
0060 Inc (Dec) in Accrued Salaries/Benefits (0461)					
0065 Inc (Dec) in Net Pension Liabilities (0570)					
0066 Inc (Dec) in Other Postemp Benefit Oblig (0560)					
0061 Inc (Dec) in Payroll Deductions/Withholding (0462)					
0062 Inc (Dec) in Unearned Revenue (0480)					
0063 Inc (Dec) in Other Current or Noncurrent Liabilities					
0067 Deferred Inflows (0950)					

<b>Total Adjustments</b>					
<b>Cash Provided By (Used for) Total</b>	<b>(\$1,517,384)</b>			<b>(\$1,517,384)</b>	<b>(\$467,823)</b>

COMBINED STATEMENT OF CASH FLOWS  
SCHEDULE OF NONCASH INVESTING, CAPITAL, AND FINANCING ACTIVITIES

Explanation of Transaction and Balance Sheet Effect	Amount
<b>Total</b>	

	<u>Revenue Reported In Current Year</u>	<u>Current Year Tax Accrual</u>	<u>Prior Year Tax Accrual</u>	<u>Taxes Collected In Current Year</u>
<b><u>Revenue from Local Sources</u></b>				
6111 Current Real Estate Taxes	45,292,283.00			45,292,283.00
6112 Interim Real Estate Taxes	163,609.00			163,609.00
6113 Public Utility Realty Taxes	44,358.73			44,358.73
6114 Payments in Lieu of Current Taxes - State / Local	100,000.00			100,000.00
6151 Current Act 511 Earned Income Taxes	4,459,663.82			4,459,663.82
6153 Current Act 511 Real Estate Transfer Taxes	778,464.35			778,464.35
6411 Delinquent Real Estate Taxes	769,088.11			769,088.11
6500 Earnings on Investments	1,119,983.10			
6700 Revenues from LEA Activities	54,262.84			
6831 Federal Revenue Received from Other Pennsylvania Public LEAs	41,939.52			
6832 Federal IDEA Revenue Received as Pass Through	597,433.86			
6910 Rentals	90,437.00			
6920 Contributions and Donations from Private Sources	60,096.00			
6944 Receipts from Other LEAs in Pennsylvania - Education	153,837.06			
6980 Revenue from Community Services Activities	11,750.00			
6991 Refunds of a Prior Year Expenditure	66,877.09			
6999 Other Revenues Not Specified Above	224,547.98			
<b>TOTAL Revenue from Local Sources</b>	<b>\$54,028,631.46</b>			<b>\$51,607,467.01</b>

**Revenue Reported  
In Current Year**

**Revenue from State Sources**

7111 Basic Education Funding-Formula	5,806,353.52		
7160 Tuition for Orphans Subsidy	264,730.23		
7271 Special Education funds for School-Aged Pupils	1,631,860.35		
7311 Pupil Transportation Subsidy	636,474.32		
7312 Nonpublic and Charter School Pupil Transportation Subsidy	58,520.00		
7320 Rental and Sinking Fund Payments / Building Reimbursement Subsidy	307,464.97		
7330 Health Services (Medical, Dental, Nurse, Act 25)	63,356.77		
7340 State Property Tax Reduction Allocation	833,205.28		
7361 School Safety and Security Grants	115,355.46		
7362 School Mental Health & Safety and Security Grants	114,258.41		
7505 Ready to Learn Block Grant	171,965.00		
7599 Other State Revenue Not Listed Elsewhere in the 7000 Series	58,000.00		
7810 State Share of Social Security and Medicare Taxes	996,946.61		
7820 State Share of Retirement Contributions	4,371,907.48		
<b>TOTAL Revenue from State Sources</b>	<b>\$15,430,398.40</b>		

	<b>Revenue Reported In Current Year</b>			
<b>Revenue from Federal Sources</b>				
8514 Title I - Improving the Academic Achievement of the Disadvantaged	436,381.00			
8515 Title II - Preparing, Training, and Recruiting High Quality Teachers and Principals	77,078.33			
8516 Title III - Language Instruction for English Learners and Immigrant Students	28,800.00			
8517 Title IV - 21st Century Schools	12,463.30			
8744 ARP ESSER - Elementary and Secondary School Emergency Relief Fund	927,299.75			
8752 ARP ESSER Summer Programs	7,697.65			
8753 ARP ESSER Afterschool Programs	18,693.89			
8754 ARP ESSER Homeless Children and Youth Funds	9,031.75			
<b>TOTAL Revenue from Federal Sources</b>	<b>\$1,517,445.67</b>			

**Revenue Reported  
In Current Year**

**Other Financing Sources**

9400 Sale of or Compensation for Loss of Fixed Assets	40.00	
<b>TOTAL Other Financing Sources</b>	<b>\$40.00</b>	
<b>TOTAL FROM ALL SOURCES</b>	<b>\$70,976,515.53</b>	<b>\$51,607,467.01</b>

LEA : 112679403 York Suburban SD

Printed 1/17/2025 11:14:53 AM

	<u>General Fund (10)</u>	<u>Student Sponsored Activity Fund (21)</u>	<u>Public Purpose Trust (27)</u>	<u>Other Compt Approved (28)</u>	<u>Athletic / Activity (29)</u>	<u>Capital Reserve (690, 1850) (31)</u>
<b>6000 Revenue from Local Sources</b>						
6111 Current Real Estate Taxes	45,292,283.00					
6112 Interim Real Estate Taxes	163,609.00					
6113 Public Utility Realty Taxes	44,358.73					
6114 Payments in Lieu of Current Taxes - State / Local	100,000.00					
6151 Current Act 511 Earned Income Taxes	4,459,663.82					
6153 Current Act 511 Real Estate Transfer Taxes	778,464.35					
6411 Delinquent Real Estate Taxes	769,088.11					
6500 Earnings on Investments	1,119,983.10	492.00				
6700 Revenues from LEA Activities	54,262.84	70,843.00				
6831 Federal Revenue Received from Other Pennsylvania Public LEAs	41,939.52					
6832 Federal IDEA Revenue Received as Pass Through	597,433.86					
6910 Rentals	90,437.00					
6920 Contributions and Donations from Private Sources	60,096.00	5,275.00				
6944 Receipts from Other LEAs in Pennsylvania - Education	153,837.06					
6980 Revenue from Community Services Activities	11,750.00					
6991 Refunds of a Prior Year Expenditure	66,877.09					
6999 Other Revenues Not Specified Above	224,547.98	17,789.00				
<b>6000 Total Revenue from Local Sources</b>	<b>\$54,028,631.46</b>	<b>\$94,399.00</b>				
<b>7000 Revenue from State Sources</b>						
7111 Basic Education Funding-Formula	5,806,353.52					
7160 Tuition for Orphans Subsidy	264,730.23					
7271 Special Education funds for School-Aged Pupils	1,631,860.35					
7311 Pupil Transportation Subsidy	636,474.32					
7312 Nonpublic and Charter School Pupil Transportation Subsidy	58,520.00					
7320 Rental and Sinking Fund Payments / Building Reimbursement Subsidy	307,464.97					
7330 Health Services (Medical, Dental, Nurse, Act 25)	63,356.77					
7340 State Property Tax Reduction Allocation	833,205.28					
7361 School Safety and Security Grants	115,355.46					
7362 School Mental Health & Safety and Security Grants	114,258.41					
7505 Ready to Learn Block Grant	171,965.00					
7599 Other State Revenue Not Listed Elsewhere in the 7000 Series	58,000.00					
7810 State Share of Social Security and Medicare Taxes	996,946.61					
7820 State Share of Retirement Contributions	4,371,907.48					
<b>7000 Total Revenue from State Sources</b>	<b>\$15,430,398.40</b>					



LEA : 112679403 York Suburban SD

Printed 1/17/2025 11:14:53 AM

	<u>Capital Reserve</u> <u>(1431) (32)</u>	<u>Other Capital</u> <u>Projects Fund (39)</u>	<u>Debt Service (40)</u>	<u>Permanent (90)</u>	<u>Total</u>
<b>6000 Revenue from Local Sources</b>					
6111 Current Real Estate Taxes					45,292,283.00
6112 Interim Real Estate Taxes					163,609.00
6113 Public Utility Realty Taxes					44,358.73
6114 Payments in Lieu of Current Taxes - State / Local					100,000.00
6151 Current Act 511 Earned Income Taxes					4,459,663.82
6153 Current Act 511 Real Estate Transfer Taxes					778,464.35
6411 Delinquent Real Estate Taxes					769,088.11
6500 Earnings on Investments	3,515.00	202,772.38	468,899.00		1,795,661.48
6700 Revenues from LEA Activities					125,105.84
6831 Federal Revenue Received from Other Pennsylvania Public LEAs					41,939.52
6832 Federal IDEA Revenue Received as Pass Through					597,433.86
6910 Rentals					90,437.00
6920 Contributions and Donations from Private Sources					65,371.00
6944 Receipts from Other LEAs in Pennsylvania - Education					153,837.06
6980 Revenue from Community Services Activities					11,750.00
6991 Refunds of a Prior Year Expenditure					66,877.09
6999 Other Revenues Not Specified Above					242,336.98
<b>6000 Total Revenue from Local Sources</b>	<b>\$3,515.00</b>	<b>\$202,772.38</b>	<b>\$468,899.00</b>		<b>\$54,798,216.84</b>
<b>7000 Revenue from State Sources</b>					
7111 Basic Education Funding-Formula					5,806,353.52
7160 Tuition for Orphans Subsidy					264,730.23
7271 Special Education funds for School-Aged Pupils					1,631,860.35
7311 Pupil Transportation Subsidy					636,474.32
7312 Nonpublic and Charter School Pupil Transportation Subsidy					58,520.00
7320 Rental and Sinking Fund Payments / Building Reimbursement Subsidy					307,464.97
7330 Health Services (Medical, Dental, Nurse, Act 25)					63,356.77
7340 State Property Tax Reduction Allocation					833,205.28
7361 School Safety and Security Grants					115,355.46
7362 School Mental Health & Safety and Security Grants					114,258.41
7505 Ready to Learn Block Grant					171,965.00
7599 Other State Revenue Not Listed Elsewhere in the 7000 Series					58,000.00
7810 State Share of Social Security and Medicare Taxes					996,946.61
7820 State Share of Retirement Contributions					4,371,907.48
<b>7000 Total Revenue from State Sources</b>					<b>\$15,430,398.40</b>

LEA : 112679403 York Suburban SD

Printed 1/17/2025 11:14:53 AM

	<u>General Fund (10)</u>	<u>Student Sponsored Activity Fund (21)</u>	<u>Public Purpose Trust (27)</u>	<u>Other Compt Approved (28)</u>	<u>Athletic / Activity (29)</u>	<u>Capital Reserve (690, 1850) (31)</u>
<b>8000 Revenue from Federal Sources</b>						
8514 Title I - Improving the Academic Achievement of the Disadvantaged	436,381.00					
8515 Title II - Preparing, Training, and Recruiting High Quality Teachers and Principals	77,078.33					
8516 Title III - Language Instruction for English Learners and Immigrant Students	28,800.00					
8517 Title IV - 21st Century Schools	12,463.30					
8744 ARP ESSER - Elementary and Secondary School Emergency Relief Fund	927,299.75					
8752 ARP ESSER Summer Programs	7,697.65					
8753 ARP ESSER Afterschool Programs	18,693.89					
8754 ARP ESSER Homeless Children and Youth Funds	9,031.75					
<b>8000 Total Revenue from Federal Sources</b>	<b>\$1,517,445.67</b>					
<b>9000 Other Financing Sources</b>						
9110 Face Value of Bonds Issued						
9130 Bond Premiums						
9310 General Fund Transfers						
9400 Sale of or Compensation for Loss of Fixed Assets	40.00					
<b>9000 Total Other Financing Sources</b>	<b>\$40.00</b>					
<b>Total From All Sources</b>	<b>\$70,976,515.53</b>	<b>\$94,399.00</b>				

	<u>Capital Reserve</u> <u>(1431) (32)</u>	<u>Other Capital</u> <u>Projects Fund (39)</u>	<u>Debt Service (40)</u>	<u>Permanent (90)</u>	<u>Total</u>
<b>8000 Revenue from Federal Sources</b>					
8514 Title I - Improving the Academic Achievement of the Disadvantaged					436,381.00
8515 Title II - Preparing, Training, and Recruiting High Quality Teachers and Principals					77,078.33
8516 Title III - Language Instruction for English Learners and Immigrant Students					28,800.00
8517 Title IV - 21st Century Schools					12,463.30
8744 ARP ESSER - Elementary and Secondary School Emergency Relief Fund					927,299.75
8752 ARP ESSER Summer Programs					7,697.65
8753 ARP ESSER Afterschool Programs					18,693.89
8754 ARP ESSER Homeless Children and Youth Funds					9,031.75
<b>8000 Total Revenue from Federal Sources</b>					<b>\$1,517,445.67</b>
<b>9000 Other Financing Sources</b>					
9110 Face Value of Bonds Issued			19,475,000.00		19,475,000.00
9130 Bond Premiums			517,282.00		517,282.00
9310 General Fund Transfers	300,000.00		6,193,280.97		6,493,280.97
9400 Sale of or Compensation for Loss of Fixed Assets					40.00
<b>9000 Total Other Financing Sources</b>	<b>\$300,000.00</b>		<b>\$26,185,562.97</b>		<b>\$26,485,602.97</b>
<b>Total From All Sources</b>	<b>\$303,515.00</b>	<b>\$202,772.38</b>	<b>\$26,654,461.97</b>		<b>\$98,231,663.88</b>

	<u>General Fund (10)</u>	<u>Student Sponsored Activity Fund (21)</u>	<u>Public Purpose Trust (27)</u>	<u>Other Compt Approved (28)</u>	<u>Athletic / Activity (29)</u>	<u>Capital Reserve (690. 1850) (31)</u>
Revenue from Local Sources	54,028,631.46	94,399.00				
Revenue from State Sources	15,430,398.40					
Revenue from Federal Sources	1,517,445.67					
Other Financing Sources	40.00					
<b>Total From All Sources</b>	<b>\$70,976,515.53</b>	<b>\$94,399.00</b>				

	<u>Capital Reserve (1431)</u> <u>(32)</u>	<u>Other Capital Projects</u> <u>Fund (39)</u>	<u>Debt Service (40)</u>	<u>Permanent (90)</u>	<u>Total</u>
Revenue from Local Sources	3,515.00	202,772.38	468,899.00		54,798,216.84
Revenue from State Sources					15,430,398.40
Revenue from Federal Sources					1,517,445.67
Other Financing Sources	300,000.00		26,185,562.97		26,485,602.97
<b>Total From All Sources</b>	<b>\$303,515.00</b>	<b>\$202,772.38</b>	<b>\$26,654,461.97</b>		<b>\$98,231,663.88</b>

**General Fund (10)**

	<u>Total</u>
<b>1000 Instruction</b>	
<b>100 Personnel Services – Salaries</b>	
100 Personnel Services – Salaries	20,261,774.08
<b>Total Personnel Services – Salaries</b>	<b>\$20,261,774.08</b>
<b>200 Personnel Services – Employee Benefits</b>	
210 Group Insurance – Contracted Provider	23,793.52
220 Social Security Contributions	1,459,986.72
230 PSERS Retirement Contributions	7,062,856.55
250 Unemployment Compensation	15,236.42
260 Workers’ Compensation	118,788.86
270 Group Insurance – Self-Insurance	4,210,405.42
291 Other Retirement Plans	53,804.68
299 All Other Employee Benefits	1,002.34
<b>Total Personnel Services – Employee Benefits</b>	<b>\$12,945,874.51</b>
<b>300 Purchased Professional and Technical Services</b>	
322 Professional Educational Services – Ius	2,549,865.54
323 Professional Educational Services – Other Educational Agencies	1,564,359.88
330 Other Professional Services	462,004.44
<b>Total Purchased Professional and Technical Services</b>	<b>\$4,576,229.86</b>
<b>400 Purchased Property Services</b>	
410 Cleaning Services	610.00
430 Repairs and Maintenance Services	93,899.27
440 Rentals	106,328.65
<b>Total Purchased Property Services</b>	<b>\$200,837.92</b>
<b>500 Other Purchased Services</b>	
510 Student Transportation Services	59,512.66
530 Communications	1,419.26
550 Printing and Binding	11,645.83
561 Tuition To Other School Districts Within the State	108,763.14
562 Tuition To Pennsylvania Charter Schools	3,127,499.74
564 Tuition To Career and Technology Centers	1,505,696.52
566 Tuition To Institutions of Higher Education and Technical Institutes	26,048.18
568 Tuition To Private Residential Rehabilitative Institutions (PRRI) [In-State] and Detention Centers	162,694.82
569 Tuition – Other	85,194.00
580 Travel	11,278.03
<b>Total Other Purchased Services</b>	<b>\$5,099,752.18</b>
<b>600 Supplies</b>	
610 General Supplies	501,964.35
630 Food	8,542.54
640 Books and Periodicals	173,479.95
650 Supplies & Fees – Technology Related	337,593.81
<b>Total Supplies</b>	<b>\$1,021,580.65</b>
<b>700 Property</b>	
752 Capital Equipment – Original and Additional	8,894.47

**General Fund (10)**

<b>1000 Instruction</b>	<b><u>Total</u></b>
<b>700 <u>Property</u></b>	
762 Capitalized Equipment - Replacement	8,409.99
766 Capitalized Technology Equipment – Replacement	4,214.58
<b>Total Property</b>	<b>\$21,519.04</b>
<b>800 <u>Other Objects</u></b>	
810 Dues and Fees	26,223.73
890 Miscellaneous Expenditures	56,727.64
<b>Total Other Objects</b>	<b>\$82,951.37</b>
<b>Total 1000 Instruction</b>	<b>\$44,210,519.61</b>

**General Fund (10)**

**1100 Regular Programs – Elementary / Secondary**

	<u>Elementary</u>	<u>Secondary</u>	<u>Federal</u>	<u>Total</u>
<b>100 Personnel Services – Salaries</b>				
100 Personnel Services – Salaries	10,427,126.48	5,994,690.58	448,159.65	16,869,976.71
<b>Total Personnel Services – Salaries</b>	<b>\$10,427,126.48</b>	<b>\$5,994,690.58</b>	<b>\$448,159.65</b>	<b>\$16,869,976.71</b>
<b>200 Personnel Services – Employee Benefits</b>				
210 Group Insurance – Contracted Provider	14,375.87	5,442.14	336.85	20,154.86
220 Social Security Contributions	834,447.37	359,315.19	19,205.86	1,212,968.42
230 PSERS Retirement Contributions	4,041,696.34	1,747,158.64	72,900.07	5,861,755.05
250 Unemployment Compensation		15,236.42		15,236.42
260 Workers' Compensation	66,845.71	29,428.97	2,447.82	98,722.50
270 Group Insurance – Self-Insurance	2,508,039.34	745,423.44	85,164.32	3,338,627.10
291 Other Retirement Plans	31,370.00	14,934.68		46,304.68
299 All Other Employee Benefits	482.34	520.00		1,002.34
<b>Total Personnel Services – Employee Benefits</b>	<b>\$7,497,256.97</b>	<b>\$2,917,459.48</b>	<b>\$180,054.92</b>	<b>\$10,594,771.37</b>
<b>300 Purchased Professional and Technical Services</b>				
322 Professional Educational Services – Ius	41,545.26	300,815.74		342,361.00
330 Other Professional Services	14,015.92	142,933.49		156,949.41
<b>Total Purchased Professional and Technical Services</b>	<b>\$55,561.18</b>	<b>\$443,749.23</b>		<b>\$499,310.41</b>
<b>400 Purchased Property Services</b>				
410 Cleaning Services		610.00		610.00
430 Repairs and Maintenance Services	68,360.22	25,539.05		93,899.27
440 Rentals	28,516.35	10,562.30		39,078.65
<b>Total Purchased Property Services</b>	<b>\$96,876.57</b>	<b>\$36,711.35</b>		<b>\$133,587.92</b>
<b>500 Other Purchased Services</b>				
510 Student Transportation Services	18,222.35	41,290.31		59,512.66
530 Communications		1,419.26		1,419.26
550 Printing and Binding	1,145.40	10,500.43		11,645.83
561 Tuition To Other School Districts Within the State	29,104.04	2,091.61		31,195.65
562 Tuition To Pennsylvania Charter Schools	991,651.32	1,103,963.40		2,095,614.72
569 Tuition – Other		85,194.00		85,194.00
580 Travel	3,715.51	7,562.52		11,278.03
<b>Total Other Purchased Services</b>	<b>\$1,043,838.62</b>	<b>\$1,252,021.53</b>		<b>\$2,295,860.15</b>
<b>600 Supplies</b>				
610 General Supplies	191,577.45	186,446.40	114,719.23	492,743.08
630 Food	2,007.61	6,330.18	204.75	8,542.54
640 Books and Periodicals	69,050.13	97,056.90	848.25	166,955.28
650 Supplies & Fees – Technology Related	185,702.55	139,946.28		325,648.83
<b>Total Supplies</b>	<b>\$448,337.74</b>	<b>\$429,779.76</b>	<b>\$115,772.23</b>	<b>\$993,889.73</b>
<b>700 Property</b>				
752 Capital Equipment – Original and Additional	224.81	8,669.66		8,894.47
762 Capitalized Equipment - Replacement	2,009.99	6,400.00		8,409.99
766 Capitalized Technology Equipment – Replacement	4,214.58			4,214.58
<b>Total Property</b>	<b>\$6,449.38</b>	<b>\$15,069.66</b>		<b>\$21,519.04</b>



General Fund (10)

1100 Regular Programs – Elementary / Secondary

Elementary

Secondary

Federal

Total

800 Other Objects

810 Dues and Fees

1,284.67

2,184.06

3,468.73

890 Miscellaneous Expenditures

3,285.10

53,442.54

56,727.64

**Total Other Objects**

**\$4,569.77**

**\$55,626.60**

**\$60,196.37**

**Total 1100 Regular Programs – Elementary / Secondary**

**\$19,580,016.71**

**\$11,145,108.19**

**\$743,986.80**

**\$31,469,111.70**

**General Fund (10)**

**1110 Regular Programs**

	<u>Elementary</u>	<u>Secondary</u>	<u>Federal</u>	<u>Total</u>
<b>100 Personnel Services – Salaries</b>				
100 Personnel Services – Salaries	10,427,126.48	5,994,690.58	77,582.04	16,499,399.10
<b>Total Personnel Services – Salaries</b>	<b>\$10,427,126.48</b>	<b>\$5,994,690.58</b>	<b>\$77,582.04</b>	<b>\$16,499,399.10</b>
<b>200 Personnel Services – Employee Benefits</b>				
210 Group Insurance – Contracted Provider	14,375.87	5,442.14	78.22	19,896.23
220 Social Security Contributions	834,447.37	359,315.19	7,284.49	1,201,047.05
230 PSERS Retirement Contributions	4,041,696.34	1,747,158.64	15,585.10	5,804,440.08
250 Unemployment Compensation		15,236.42		15,236.42
260 Workers' Compensation	66,845.71	29,428.97	509.43	96,784.11
270 Group Insurance – Self-Insurance	2,508,039.34	745,423.44	9,319.68	3,262,782.46
291 Other Retirement Plans	31,370.00	14,934.68		46,304.68
299 All Other Employee Benefits	482.34	520.00		1,002.34
<b>Total Personnel Services – Employee Benefits</b>	<b>\$7,497,256.97</b>	<b>\$2,917,459.48</b>	<b>\$32,776.92</b>	<b>\$10,447,493.37</b>
<b>300 Purchased Professional and Technical Services</b>				
322 Professional Educational Services – Ius	41,545.26	300,815.74		342,361.00
330 Other Professional Services	14,015.92	142,933.49		156,949.41
<b>Total Purchased Professional and Technical Services</b>	<b>\$55,561.18</b>	<b>\$443,749.23</b>		<b>\$499,310.41</b>
<b>400 Purchased Property Services</b>				
410 Cleaning Services		610.00		610.00
430 Repairs and Maintenance Services	68,360.22	25,539.05		93,899.27
440 Rentals	28,516.35	10,562.30		39,078.65
<b>Total Purchased Property Services</b>	<b>\$96,876.57</b>	<b>\$36,711.35</b>		<b>\$133,587.92</b>
<b>500 Other Purchased Services</b>				
510 Student Transportation Services	18,222.35	41,290.31		59,512.66
530 Communications		1,419.26		1,419.26
550 Printing and Binding	1,145.40	10,500.43		11,645.83
561 Tuition To Other School Districts Within the State	29,104.04	2,091.61		31,195.65
562 Tuition To Pennsylvania Charter Schools	991,651.32	1,103,963.40		2,095,614.72
569 Tuition – Other		85,194.00		85,194.00
580 Travel	3,715.51	7,562.52		11,278.03
<b>Total Other Purchased Services</b>	<b>\$1,043,838.62</b>	<b>\$1,252,021.53</b>		<b>\$2,295,860.15</b>
<b>600 Supplies</b>				
610 General Supplies	191,577.45	186,446.40	105,922.93	483,946.78
630 Food	2,007.61	6,330.18		8,337.79
640 Books and Periodicals	69,050.13	97,056.90		166,107.03
650 Supplies & Fees – Technology Related	185,702.55	139,946.28		325,648.83
<b>Total Supplies</b>	<b>\$448,337.74</b>	<b>\$429,779.76</b>	<b>\$105,922.93</b>	<b>\$984,040.43</b>
<b>700 Property</b>				
752 Capital Equipment – Original and Additional	224.81	8,669.66		8,894.47
762 Capitalized Equipment - Replacement	2,009.99	6,400.00		8,409.99
766 Capitalized Technology Equipment – Replacement	4,214.58			4,214.58
<b>Total Property</b>	<b>\$6,449.38</b>	<b>\$15,069.66</b>		<b>\$21,519.04</b>

**General Fund (10)**

**1110 Regular Programs**

**800 Other Objects**

	<u>Elementary</u>	<u>Secondary</u>	<u>Federal</u>	<u>Total</u>
810 Dues and Fees	1,284.67	2,184.06		3,468.73
890 Miscellaneous Expenditures	3,285.10	53,442.54		56,727.64
<b>Total Other Objects</b>	<b>\$4,569.77</b>	<b>\$55,626.60</b>		<b>\$60,196.37</b>
<b>Total 1110 Regular Programs</b>	<b>\$19,580,016.71</b>	<b>\$11,145,108.19</b>	<b>\$216,281.89</b>	<b>\$30,941,406.79</b>

**General Fund (10)**

**1190 Federally-Funded Regular Programs**

	<u>Elementary</u>	<u>Secondary</u>	<u>Federal</u>	<u>Total</u>
<b>100 Personnel Services – Salaries</b>				
100 Personnel Services – Salaries			370,577.61	370,577.61
<b>Total Personnel Services – Salaries</b>			<b>\$370,577.61</b>	<b>\$370,577.61</b>
<b>200 Personnel Services – Employee Benefits</b>				
210 Group Insurance – Contracted Provider			258.63	258.63
220 Social Security Contributions			11,921.37	11,921.37
230 PSERS Retirement Contributions			57,314.97	57,314.97
260 Workers' Compensation			1,938.39	1,938.39
270 Group Insurance – Self-Insurance			75,844.64	75,844.64
<b>Total Personnel Services – Employee Benefits</b>			<b>\$147,278.00</b>	<b>\$147,278.00</b>
<b>600 Supplies</b>				
610 General Supplies			8,796.30	8,796.30
630 Food			204.75	204.75
640 Books and Periodicals			848.25	848.25
<b>Total Supplies</b>			<b>\$9,849.30</b>	<b>\$9,849.30</b>
<b>Total 1190 Federally-Funded Regular Programs</b>			<b>\$527,704.91</b>	<b>\$527,704.91</b>

**General Fund (10)**

1200 Special Programs – Elementary / Secondary	<u>Elementary</u>	<u>Secondary</u>	<u>Federal</u>	<u>Total</u>
<b>100 Personnel Services – Salaries</b>				
100 Personnel Services – Salaries	1,854,058.53	1,504,352.95		3,358,411.48
<b>Total Personnel Services – Salaries</b>	<b>\$1,854,058.53</b>	<b>\$1,504,352.95</b>		<b>\$3,358,411.48</b>
<b>200 Personnel Services – Employee Benefits</b>				
210 Group Insurance – Contracted Provider	2,626.46	1,007.32		3,633.78
220 Social Security Contributions	171,618.72	72,855.11		244,473.83
230 PSERS Retirement Contributions	836,599.67	359,449.91		1,196,049.58
260 Workers' Compensation	13,924.35	5,945.07		19,869.42
270 Group Insurance – Self-Insurance	621,696.98	249,111.95		870,808.93
291 Other Retirement Plans		7,500.00		7,500.00
<b>Total Personnel Services – Employee Benefits</b>	<b>\$1,646,466.18</b>	<b>\$695,869.36</b>		<b>\$2,342,335.54</b>
<b>300 Purchased Professional and Technical Services</b>				
322 Professional Educational Services – Ius	702,666.28	900,831.40	592,219.86	2,195,717.54
323 Professional Educational Services – Other Educational Agencies	666,113.68	898,246.20		1,564,359.88
330 Other Professional Services		305,055.03		305,055.03
<b>Total Purchased Professional and Technical Services</b>	<b>\$1,368,779.96</b>	<b>\$2,104,132.63</b>	<b>\$592,219.86</b>	<b>\$4,065,132.45</b>
<b>400 Purchased Property Services</b>				
440 Rentals		67,250.00		67,250.00
<b>Total Purchased Property Services</b>		<b>\$67,250.00</b>		<b>\$67,250.00</b>
<b>500 Other Purchased Services</b>				
561 Tuition To Other School Districts Within the State	45,514.45	18,698.37		64,212.82
562 Tuition To Pennsylvania Charter Schools	463,998.47	567,886.55		1,031,885.02
564 Tuition To Career and Technology Centers		184,419.02		184,419.02
568 Tuition To Private Residential Rehabilitative Institutions (PRRI) [In-State] and Detention Centers	2,114.36	150,629.91		152,744.27
<b>Total Other Purchased Services</b>	<b>\$511,627.28</b>	<b>\$921,633.85</b>		<b>\$1,433,261.13</b>
<b>600 Supplies</b>				
610 General Supplies	3,927.74	3,201.70		7,129.44
640 Books and Periodicals	2,699.21	3,399.72		6,098.93
650 Supplies & Fees – Technology Related		1,399.98		1,399.98
<b>Total Supplies</b>	<b>\$6,626.95</b>	<b>\$8,001.40</b>		<b>\$14,628.35</b>
<b>800 Other Objects</b>				
810 Dues and Fees		22,755.00		22,755.00
<b>Total Other Objects</b>		<b>\$22,755.00</b>		<b>\$22,755.00</b>
<b>Total 1200 Special Programs – Elementary / Secondary</b>	<b>\$5,387,558.90</b>	<b>\$5,323,995.19</b>	<b>\$592,219.86</b>	<b>\$11,303,773.95</b>



**General Fund (10)**

**1220 Sensory Support**

	<u>Elementary</u>	<u>Secondary</u>	<u>Federal</u>	<u>Total</u>
<b>100 Personnel Services – Salaries</b>				
100 Personnel Services – Salaries		152,815.00		152,815.00
<b>Total Personnel Services – Salaries</b>		<b>\$152,815.00</b>		<b>\$152,815.00</b>
<b>200 Personnel Services – Employee Benefits</b>				
210 Group Insurance – Contracted Provider		181.06		181.06
220 Social Security Contributions		11,176.98		11,176.98
230 PSERS Retirement Contributions		55,004.43		55,004.43
260 Workers' Compensation		901.53		901.53
270 Group Insurance – Self-Insurance		29,544.56		29,544.56
<b>Total Personnel Services – Employee Benefits</b>		<b>\$96,808.56</b>		<b>\$96,808.56</b>
<b>300 Purchased Professional and Technical Services</b>				
322 Professional Educational Services – lus	79,516.01	94,687.39		174,203.40
330 Other Professional Services		304,527.03		304,527.03
<b>Total Purchased Professional and Technical Services</b>	<b>\$79,516.01</b>	<b>\$399,214.42</b>		<b>\$478,730.43</b>
<b>600 Supplies</b>				
610 General Supplies	932.99	3,103.46		4,036.45
<b>Total Supplies</b>	<b>\$932.99</b>	<b>\$3,103.46</b>		<b>\$4,036.45</b>
<b>Total 1220 Sensory Support</b>	<b>\$80,449.00</b>	<b>\$651,941.44</b>		<b>\$732,390.44</b>

**General Fund (10)**

	<u>Elementary</u>	<u>Secondary</u>	<u>Federal</u>	<u>Total</u>
<b>1230 Emotional Support</b>				
<b>100 Personnel Services – Salaries</b>				
100 Personnel Services – Salaries	264,664.03	815,891.90		1,080,555.93
<b>Total Personnel Services – Salaries</b>	<b>\$264,664.03</b>	<b>\$815,891.90</b>		<b>\$1,080,555.93</b>
<b>200 Personnel Services – Employee Benefits</b>				
210 Group Insurance – Contracted Provider	884.46	262.03		1,146.49
220 Social Security Contributions	60,071.85	17,900.99		77,972.84
230 PSERS Retirement Contributions	306,552.75	91,228.65		397,781.40
260 Workers' Compensation	4,870.47	1,451.55		6,322.02
270 Group Insurance – Self-Insurance	267,939.54	79,442.98		347,382.52
291 Other Retirement Plans		7,500.00		7,500.00
<b>Total Personnel Services – Employee Benefits</b>	<b>\$640,319.07</b>	<b>\$197,786.20</b>		<b>\$838,105.27</b>
<b>300 Purchased Professional and Technical Services</b>				
322 Professional Educational Services – Ius	364,207.61	138,805.18		503,012.79
323 Professional Educational Services – Other Educational Agencies	666,113.68	898,246.20		1,564,359.88
<b>Total Purchased Professional and Technical Services</b>	<b>\$1,030,321.29</b>	<b>\$1,037,051.38</b>		<b>\$2,067,372.67</b>
<b>500 Other Purchased Services</b>				
561 Tuition To Other School Districts Within the State		10,523.80		10,523.80
568 Tuition To Private Residential Rehabilitative Institutions (PRRI) [In-State] and Detention Centers	2,114.36	142,872.16		144,986.52
<b>Total Other Purchased Services</b>	<b>\$2,114.36</b>	<b>\$153,395.96</b>		<b>\$155,510.32</b>
<b>600 Supplies</b>				
610 General Supplies	2,490.21			2,490.21
640 Books and Periodicals	768.00			768.00
<b>Total Supplies</b>	<b>\$3,258.21</b>			<b>\$3,258.21</b>
<b>800 Other Objects</b>				
810 Dues and Fees		18,225.00		18,225.00
<b>Total Other Objects</b>		<b>\$18,225.00</b>		<b>\$18,225.00</b>
<b>Total 1230 Emotional Support</b>	<b>\$1,940,676.96</b>	<b>\$2,222,350.44</b>		<b>\$4,163,027.40</b>



**General Fund (10)**

	<u>Elementary</u>	<u>Secondary</u>	<u>Federal</u>	<u>Total</u>
<b>1240 Academic Support</b>				
<b>100 Personnel Services – Salaries</b>				
100 Personnel Services – Salaries	1,589,394.50	535,646.05		2,125,040.55
<b>Total Personnel Services – Salaries</b>	<b>\$1,589,394.50</b>	<b>\$535,646.05</b>		<b>\$2,125,040.55</b>
<b>200 Personnel Services – Employee Benefits</b>				
210 Group Insurance – Contracted Provider	1,742.00	564.23		2,306.23
220 Social Security Contributions	111,546.87	43,777.14		155,324.01
230 PSERS Retirement Contributions	530,046.92	213,216.83		743,263.75
260 Workers' Compensation	9,053.88	3,591.99		12,645.87
270 Group Insurance – Self-Insurance	353,757.44	140,124.41		493,881.85
<b>Total Personnel Services – Employee Benefits</b>	<b>\$1,006,147.11</b>	<b>\$401,274.60</b>		<b>\$1,407,421.71</b>
<b>300 Purchased Professional and Technical Services</b>				
322 Professional Educational Services – lus	4,300.00	64,778.29	392,219.86	461,298.15
330 Other Professional Services		528.00		528.00
<b>Total Purchased Professional and Technical Services</b>	<b>\$4,300.00</b>	<b>\$65,306.29</b>	<b>\$392,219.86</b>	<b>\$461,826.15</b>
<b>400 Purchased Property Services</b>				
440 Rentals		67,250.00		67,250.00
<b>Total Purchased Property Services</b>		<b>\$67,250.00</b>		<b>\$67,250.00</b>
<b>500 Other Purchased Services</b>				
561 Tuition To Other School Districts Within the State	39,840.60	6,620.23		46,460.83
562 Tuition To Pennsylvania Charter Schools	463,998.47	567,886.55		1,031,885.02
564 Tuition To Career and Technology Centers		184,419.02		184,419.02
568 Tuition To Private Residential Rehabilitative Institutions (PRRI) [In-State] and Detention Centers		7,757.75		7,757.75
<b>Total Other Purchased Services</b>	<b>\$503,839.07</b>	<b>\$766,683.55</b>		<b>\$1,270,522.62</b>
<b>600 Supplies</b>				
610 General Supplies	504.54	98.24		602.78
640 Books and Periodicals	1,931.21	3,399.72		5,330.93
650 Supplies & Fees – Technology Related		1,399.98		1,399.98
<b>Total Supplies</b>	<b>\$2,435.75</b>	<b>\$4,897.94</b>		<b>\$7,333.69</b>
<b>800 Other Objects</b>				
810 Dues and Fees		4,530.00		4,530.00
<b>Total Other Objects</b>		<b>\$4,530.00</b>		<b>\$4,530.00</b>
<b>Total 1240 Academic Support</b>	<b>\$3,106,116.43</b>	<b>\$1,845,588.43</b>	<b>\$392,219.86</b>	<b>\$5,343,924.72</b>

**General Fund (10)**

**1241 Learning Support – Public**

	<u>Elementary</u>	<u>Secondary</u>	<u>Federal</u>	<u>Total</u>
<b>100 Personnel Services – Salaries</b>				
100 Personnel Services – Salaries	1,503,799.50	535,646.05		2,039,445.55
<b>Total Personnel Services – Salaries</b>	<b>\$1,503,799.50</b>	<b>\$535,646.05</b>		<b>\$2,039,445.55</b>
<b>200 Personnel Services – Employee Benefits</b>				
210 Group Insurance – Contracted Provider	1,599.12	564.23		2,163.35
220 Social Security Contributions	105,316.77	43,777.14		149,093.91
230 PSERS Retirement Contributions	500,410.40	213,216.83		713,627.23
260 Workers' Compensation	8,548.95	3,591.99		12,140.94
270 Group Insurance – Self-Insurance	330,395.73	140,124.41		470,520.14
<b>Total Personnel Services – Employee Benefits</b>	<b>\$946,270.97</b>	<b>\$401,274.60</b>		<b>\$1,347,545.57</b>
<b>300 Purchased Professional and Technical Services</b>				
322 Professional Educational Services – lus	4,300.00	64,778.29	392,219.86	461,298.15
330 Other Professional Services		528.00		528.00
<b>Total Purchased Professional and Technical Services</b>	<b>\$4,300.00</b>	<b>\$65,306.29</b>	<b>\$392,219.86</b>	<b>\$461,826.15</b>
<b>400 Purchased Property Services</b>				
440 Rentals		67,250.00		67,250.00
<b>Total Purchased Property Services</b>		<b>\$67,250.00</b>		<b>\$67,250.00</b>
<b>500 Other Purchased Services</b>				
561 Tuition To Other School Districts Within the State	39,840.60	6,620.23		46,460.83
562 Tuition To Pennsylvania Charter Schools	463,998.47	567,886.55		1,031,885.02
564 Tuition To Career and Technology Centers		184,419.02		184,419.02
568 Tuition To Private Residential Rehabilitative Institutions (PRRI) [In-State] and Detention Centers		7,757.75		7,757.75
<b>Total Other Purchased Services</b>	<b>\$503,839.07</b>	<b>\$766,683.55</b>		<b>\$1,270,522.62</b>
<b>600 Supplies</b>				
610 General Supplies	57.99	98.24		156.23
640 Books and Periodicals	1,931.21	3,399.72		5,330.93
650 Supplies & Fees – Technology Related		1,399.98		1,399.98
<b>Total Supplies</b>	<b>\$1,989.20</b>	<b>\$4,897.94</b>		<b>\$6,887.14</b>
<b>800 Other Objects</b>				
810 Dues and Fees		4,530.00		4,530.00
<b>Total Other Objects</b>		<b>\$4,530.00</b>		<b>\$4,530.00</b>
<b>Total 1241 Learning Support – Public</b>	<b>\$2,960,198.74</b>	<b>\$1,845,588.43</b>	<b>\$392,219.86</b>	<b>\$5,198,007.03</b>

**General Fund (10)**

**1243 Gifted Support**

	<u>Elementary</u>	<u>Secondary</u>	<u>Federal</u>	<u>Total</u>
<b>100 Personnel Services – Salaries</b>				
100 Personnel Services – Salaries	85,595.00			85,595.00
<b>Total Personnel Services – Salaries</b>	<b>\$85,595.00</b>			<b>\$85,595.00</b>
<b>200 Personnel Services – Employee Benefits</b>				
210 Group Insurance – Contracted Provider	142.88			142.88
220 Social Security Contributions	6,230.10			6,230.10
230 PSERS Retirement Contributions	29,636.52			29,636.52
260 Workers' Compensation	504.93			504.93
270 Group Insurance – Self-Insurance	23,361.71			23,361.71
<b>Total Personnel Services – Employee Benefits</b>	<b>\$59,876.14</b>			<b>\$59,876.14</b>
<b>600 Supplies</b>				
610 General Supplies	446.55			446.55
<b>Total Supplies</b>	<b>\$446.55</b>			<b>\$446.55</b>
<b>Total 1243 Gifted Support</b>	<b>\$145,917.69</b>			<b>\$145,917.69</b>

General Fund (10)

1270 Multi-Handicapped Support

300 Purchased Professional and Technical Services

322 Professional Educational Services – lus

**Total Purchased Professional and Technical Services**

**Total 1270 Multi-Handicapped Support**

Elementary

Secondary

Federal

Total

235,071.45

235,071.45

**\$235,071.45**

**\$235,071.45**

**\$235,071.45**

**\$235,071.45**

General Fund (10)

1280 Early Intervention Support

300 Purchased Professional and Technical Services

322 Professional Educational Services – lus

**Total Purchased Professional and Technical Services**

**Total 1280 Early Intervention Support**

Elementary

Secondary

Federal

Total

5,229.80

5,229.80

**\$5,229.80**

**\$5,229.80**

**\$5,229.80**

**\$5,229.80**

General Fund (10)

1290 Special Programs - Other Support

300 Purchased Professional and Technical Services

322 Professional Educational Services – lus

**Total Purchased Professional and Technical Services**

**Total 1290 Special Programs - Other Support**

Elementary

Secondary

Federal

Total

246,853.02

366,182.79

613,035.81

**\$246,853.02**

**\$366,182.79**

**\$613,035.81**

**\$246,853.02**

**\$366,182.79**

**\$613,035.81**

General Fund (10)

1300 Vocational Education

Elementary

Secondary

Federal

Total

500 Other Purchased Services

564 Tuition To Career and Technology Centers

1,321,277.50

1,321,277.50

**Total Other Purchased Services**

**\$1,321,277.50**

**\$1,321,277.50**

**Total 1300 Vocational Education**

**\$1,321,277.50**

**\$1,321,277.50**

**General Fund (10)**

	<u>Elementary</u>	<u>Secondary</u>	<u>Federal</u>	<u>Total</u>
<b>1400 Other Instructional Programs – Elementary / Secondary</b>				
<b>100 Personnel Services – Salaries</b>				
100 Personnel Services – Salaries		33,385.89		33,385.89
<b>Total Personnel Services – Salaries</b>		<b>\$33,385.89</b>		<b>\$33,385.89</b>
<b>200 Personnel Services – Employee Benefits</b>				
210 Group Insurance – Contracted Provider		4.88		4.88
220 Social Security Contributions		2,544.47		2,544.47
230 PSERS Retirement Contributions		5,051.92		5,051.92
260 Workers' Compensation		196.94		196.94
270 Group Insurance – Self-Insurance		969.39		969.39
<b>Total Personnel Services – Employee Benefits</b>		<b>\$8,767.60</b>		<b>\$8,767.60</b>
<b>500 Other Purchased Services</b>				
561 Tuition To Other School Districts Within the State		13,354.67		13,354.67
568 Tuition To Private Residential Rehabilitative Institutions (PRRI) [In-State] and Detention Centers	541.50	9,409.05		9,950.55
<b>Total Other Purchased Services</b>	<b>\$541.50</b>	<b>\$22,763.72</b>		<b>\$23,305.22</b>
<b>600 Supplies</b>				
610 General Supplies		2,091.83		2,091.83
640 Books and Periodicals		425.74		425.74
650 Supplies & Fees – Technology Related		10,545.00		10,545.00
<b>Total Supplies</b>		<b>\$13,062.57</b>		<b>\$13,062.57</b>
<b>Total 1400 Other Instructional Programs – Elementary / Secondary</b>	<b>\$541.50</b>	<b>\$77,979.78</b>		<b>\$78,521.28</b>



General Fund (10)

1410 Drivers' Education

100 Personnel Services – Salaries

100 Personnel Services – Salaries

Total Personnel Services – Salaries

200 Personnel Services – Employee Benefits

220 Social Security Contributions

230 PSERS Retirement Contributions

260 Workers' Compensation

Total Personnel Services – Employee Benefits

Total 1410 Drivers' Education

	<u>Elementary</u>	<u>Secondary</u>	<u>Federal</u>	<u>Total</u>
		6,489.08		6,489.08
<b>Total Personnel Services – Salaries</b>		<b>\$6,489.08</b>		<b>\$6,489.08</b>
		496.36		496.36
		629.83		629.83
		38.25		38.25
<b>Total Personnel Services – Employee Benefits</b>		<b>\$1,164.44</b>		<b>\$1,164.44</b>
<b>Total 1410 Drivers' Education</b>		<b>\$7,653.52</b>		<b>\$7,653.52</b>

**General Fund (10)**

**1420 Summer School**

	<u>Elementary</u>	<u>Secondary</u>	<u>Federal</u>	<u>Total</u>
<b>100 Personnel Services – Salaries</b>				
100 Personnel Services – Salaries		26,896.81		26,896.81
<b>Total Personnel Services – Salaries</b>		<b>\$26,896.81</b>		<b>\$26,896.81</b>
<b>200 Personnel Services – Employee Benefits</b>				
210 Group Insurance – Contracted Provider		4.88		4.88
220 Social Security Contributions		2,048.11		2,048.11
230 PSERS Retirement Contributions		4,422.09		4,422.09
260 Workers' Compensation		158.69		158.69
270 Group Insurance – Self-Insurance		969.39		969.39
<b>Total Personnel Services – Employee Benefits</b>		<b>\$7,603.16</b>		<b>\$7,603.16</b>
<b>600 Supplies</b>				
610 General Supplies		2,091.83		2,091.83
640 Books and Periodicals		425.74		425.74
650 Supplies & Fees – Technology Related		10,545.00		10,545.00
<b>Total Supplies</b>		<b>\$13,062.57</b>		<b>\$13,062.57</b>
<b>Total 1420 Summer School</b>		<b>\$47,562.54</b>		<b>\$47,562.54</b>

General Fund (10)

1440 Alternative Regular Education Programs

500 Other Purchased Services

	<u>Elementary</u>	<u>Secondary</u>	<u>Federal</u>	<u>Total</u>
561 Tuition To Other School Districts Within the State		13,354.67		13,354.67
568 Tuition To Private Residential Rehabilitative Institutions (PRRI) [In-State] and Detention Centers	541.50	9,409.05		9,950.55
<b>Total Other Purchased Services</b>	<b>\$541.50</b>	<b>\$22,763.72</b>		<b>\$23,305.22</b>
<b>Total 1440 Alternative Regular Education Programs</b>	<b>\$541.50</b>	<b>\$22,763.72</b>		<b>\$23,305.22</b>

LEA : 112679403 York Suburban SD

Printed 1/17/2025 11:14:59 AM

General Fund (10)

1441 Adjudicated / Court-Placed Programs

Elementary

Secondary

Federal

Total

500 Other Purchased Services

561 Tuition To Other School Districts Within the State

7,982.03

7,982.03

568 Tuition To Private Residential Rehabilitative Institutions (PRRI) [In-State] and Detention Centers

57.81

57.81

**Total Other Purchased Services**

**\$8,039.84**

**\$8,039.84**

**Total 1441 Adjudicated / Court-Placed Programs**

**\$8,039.84**

**\$8,039.84**

General Fund (10)

1442 Alternative Education Programs

500 Other Purchased Services

	<u>Elementary</u>	<u>Secondary</u>	<u>Federal</u>	<u>Total</u>
561 Tuition To Other School Districts Within the State		5,372.64		5,372.64
568 Tuition To Private Residential Rehabilitative Institutions (PRRI) [In-State] and Detention Centers	541.50	9,351.24		9,892.74
<b>Total Other Purchased Services</b>	<b>\$541.50</b>	<b>\$14,723.88</b>		<b>\$15,265.38</b>
<b>Total 1442 Alternative Education Programs</b>	<b>\$541.50</b>	<b>\$14,723.88</b>		<b>\$15,265.38</b>

General Fund (10)

1500 Nonpublic School Programs

Elementary

Secondary

Federal

Total

300 Purchased Professional and Technical Services

322 Professional Educational Services – lus

11,787.00

11,787.00

**Total Purchased Professional and Technical Services**

**\$11,787.00**

**\$11,787.00**

**Total 1500 Nonpublic School Programs**

**\$11,787.00**

**\$11,787.00**

General Fund (10)

1700 Higher Education Programs for Secondary Students

Elementary

Secondary

Federal

Total

500 Other Purchased Services

566 Tuition To Institutions of Higher Education and Technical Institutes

26,048.18

**Total Other Purchased Services**

**\$26,048.18**

**Total 1700 Higher Education Programs for Secondary Students**

**\$26,048.18**

**General Fund (10)**

**2000 Support Services**

**Total**

**100 Personnel Services – Salaries**

100 Personnel Services – Salaries 7,167,687.24

**Total Personnel Services – Salaries \$7,167,687.24**

**200 Personnel Services – Employee Benefits**

210 Group Insurance – Contracted Provider 23,033.08

220 Social Security Contributions 525,584.20

230 PSERS Retirement Contributions 2,447,043.89

240 Tuition Reimbursement 253,722.90

250 Unemployment Compensation 2,187.96

260 Workers' Compensation 41,421.43

270 Group Insurance – Self-Insurance 1,399,234.48

291 Other Retirement Plans 48,672.55

**Total Personnel Services – Employee Benefits \$4,740,900.49**

**300 Purchased Professional and Technical Services**

310 Official / Administrative Services 135,814.62

322 Professional Educational Services – Ius 166,054.86

330 Other Professional Services 889,400.56

340 Technical Services 1,007.34

360 Employee Training and Development Services 93,823.95

**Total Purchased Professional and Technical Services \$1,286,101.33**

**400 Purchased Property Services**

410 Cleaning Services 78,512.07

420 Utility Services 67,775.36

430 Repairs and Maintenance Services 342,925.24

440 Rentals 23,206.44

460 Extermination Services 9,513.77

**Total Purchased Property Services \$521,932.88**

**500 Other Purchased Services**

511 Student Transportation Services from Another LEA Within the State 636,940.11

513 Contracted Carriers 1,836,517.97

516 Student Transportation Services From the IU 83,560.53

520 Insurance – General 2,060.60

522 Automotive Liability Insurance 11,535.00

523 General Property and Liability Insurance 19,359.00

529 Other Insurance 128,505.00

530 Communications 69,032.39

549 Other Advertising/Public Relations 4,812.76

550 Printing and Binding 8,921.77

580 Travel 21,874.44

595 IU Payments By Withholding 5,640.90

599 Other Miscellaneous Purchased Services 1,116.91

**Total Other Purchased Services \$2,829,877.38**

**600 Supplies**

610 General Supplies 545,603.78



**General Fund (10)**

**2000 Support Services**

**Total**

**600 Supplies**

620 Energy	904,963.54
630 Food	40,189.63
640 Books and Periodicals	62,201.46
650 Supplies & Fees – Technology Related	189,752.86

<b>Total Supplies</b>	<b>\$1,742,711.27</b>
-----------------------	-----------------------

**700 Property**

752 Capital Equipment – Original and Additional	9,945.00
756 Capitalized Technology Equipment – Original	3,199.00
762 Capitalized Equipment - Replacement	12,656.48
766 Capitalized Technology Equipment – Replacement	10,276.90

<b>Total Property</b>	<b>\$36,077.38</b>
-----------------------	--------------------

**800 Other Objects**

810 Dues and Fees	108,013.56
890 Miscellaneous Expenditures	1,195.00

<b>Total Other Objects</b>	<b>\$109,208.56</b>
----------------------------	---------------------

<b>Total 2000 Support Services</b>	<b>\$18,434,496.53</b>
------------------------------------	------------------------

**General Fund (10)**

	<u>Elementary</u>	<u>Secondary</u>	<u>Federal</u>	<u>Total</u>
<b>2100 Support Services – Students</b>				
<b>100 Personnel Services – Salaries</b>				
100 Personnel Services – Salaries	684,053.86	538,309.17	377,340.79	1,677,472.89
<b>Total Personnel Services – Salaries</b>	<b>\$684,053.86</b>	<b>\$538,309.17</b>	<b>\$377,340.79</b>	<b>\$1,677,472.89</b>
<b>200 Personnel Services – Employee Benefits</b>				
210 Group Insurance – Contracted Provider	565.62	611.37	515.47	1,974.92
220 Social Security Contributions	50,970.29	39,871.09	28,152.10	124,806.53
230 PSERS Retirement Contributions	234,180.85	182,798.94	124,398.77	567,819.92
260 Workers' Compensation	4,047.88	3,163.86	2,226.93	9,897.31
270 Group Insurance – Self-Insurance	69,727.47	80,538.60	52,644.13	213,258.18
<b>Total Personnel Services – Employee Benefits</b>	<b>\$359,492.11</b>	<b>\$306,983.86</b>	<b>\$207,937.40</b>	<b>\$917,756.86</b>
<b>300 Purchased Professional and Technical Services</b>				
330 Other Professional Services	45,469.00	37,756.81		105,725.81
<b>Total Purchased Professional and Technical Services</b>	<b>\$45,469.00</b>	<b>\$37,756.81</b>		<b>\$105,725.81</b>
<b>500 Other Purchased Services</b>				
580 Travel				236.14
599 Other Miscellaneous Purchased Services			1,106.93	1,106.93
<b>Total Other Purchased Services</b>			<b>\$1,106.93</b>	<b>\$1,343.07</b>
<b>600 Supplies</b>				
610 General Supplies	2,017.27	6,957.46		11,708.90
630 Food		1,639.17		1,639.17
640 Books and Periodicals	479.98	33,384.04		34,234.52
<b>Total Supplies</b>	<b>\$2,497.25</b>	<b>\$41,980.67</b>		<b>\$47,582.59</b>
<b>800 Other Objects</b>				
810 Dues and Fees		1,725.71	2,000.00	3,725.71
890 Miscellaneous Expenditures		1,195.00		1,195.00
<b>Total Other Objects</b>		<b>\$2,920.71</b>	<b>\$2,000.00</b>	<b>\$4,920.71</b>
<b>Total 2100 Support Services – Students</b>	<b>\$1,091,512.22</b>	<b>\$927,951.22</b>	<b>\$588,385.12</b>	<b>\$2,754,801.93</b>

**General Fund (10)**

	<u>Elementary</u>	<u>Secondary</u>	<u>Federal</u>	<u>Total</u>
<b>2110 Supervision of Student Services</b>				
<b>100 Personnel Services – Salaries</b>				
100 Personnel Services – Salaries		20,930.52		20,930.52
<b>Total Personnel Services – Salaries</b>		<b>\$20,930.52</b>		<b>\$20,930.52</b>
<b>200 Personnel Services – Employee Benefits</b>				
210 Group Insurance – Contracted Provider		13.83		13.83
220 Social Security Contributions		1,601.08		1,601.08
230 PSERS Retirement Contributions		6,734.64		6,734.64
260 Workers' Compensation		123.41		123.41
<b>Total Personnel Services – Employee Benefits</b>		<b>\$8,472.96</b>		<b>\$8,472.96</b>
<b>600 Supplies</b>				
610 General Supplies		843.43		843.43
630 Food		1,639.17		1,639.17
<b>Total Supplies</b>		<b>\$2,482.60</b>		<b>\$2,482.60</b>
<b>800 Other Objects</b>				
810 Dues and Fees		345.00		345.00
<b>Total Other Objects</b>		<b>\$345.00</b>		<b>\$345.00</b>
<b>Total 2110 Supervision of Student Services</b>		<b>\$32,231.08</b>		<b>\$32,231.08</b>

**General Fund (10)**

**2111 Supervision of Student Services – Head of Component**

	<u>Elementary</u>	<u>Secondary</u>	<u>Federal</u>	<u>Total</u>
<b>100 Personnel Services – Salaries</b>				
100 Personnel Services – Salaries		20,930.52		20,930.52
<b>Total Personnel Services – Salaries</b>		<b>\$20,930.52</b>		<b>\$20,930.52</b>
<b>200 Personnel Services – Employee Benefits</b>				
210 Group Insurance – Contracted Provider		13.83		13.83
220 Social Security Contributions		1,601.08		1,601.08
230 PSERS Retirement Contributions		6,734.64		6,734.64
260 Workers' Compensation		123.41		123.41
<b>Total Personnel Services – Employee Benefits</b>		<b>\$8,472.96</b>		<b>\$8,472.96</b>
<b>600 Supplies</b>				
610 General Supplies		843.43		843.43
630 Food		1,639.17		1,639.17
<b>Total Supplies</b>		<b>\$2,482.60</b>		<b>\$2,482.60</b>
<b>800 Other Objects</b>				
810 Dues and Fees		345.00		345.00
<b>Total Other Objects</b>		<b>\$345.00</b>		<b>\$345.00</b>
<b>Total 2111 Supervision of Student Services – Head of Component</b>		<b>\$32,231.08</b>		<b>\$32,231.08</b>

**General Fund (10)**

	<u>Elementary</u>	<u>Secondary</u>	<u>Federal</u>	<u>Total</u>
<b>2120 Guidance Services</b>				
<b>100 Personnel Services – Salaries</b>				
100 Personnel Services – Salaries	684,053.86	444,974.18		1,129,028.04
<b>Total Personnel Services – Salaries</b>	<b>\$684,053.86</b>	<b>\$444,974.18</b>		<b>\$1,129,028.04</b>
<b>200 Personnel Services – Employee Benefits</b>				
210 Group Insurance – Contracted Provider	565.62	407.27		972.89
220 Social Security Contributions	50,970.29	32,772.63		83,742.92
230 PSERS Retirement Contributions	234,180.85	153,000.25		387,181.10
260 Workers' Compensation	4,047.88	2,613.82		6,661.70
270 Group Insurance – Self-Insurance	69,727.47	80,538.60		150,266.07
<b>Total Personnel Services – Employee Benefits</b>	<b>\$359,492.11</b>	<b>\$269,332.57</b>		<b>\$628,824.68</b>
<b>600 Supplies</b>				
610 General Supplies	2,017.27	977.95		2,995.22
640 Books and Periodicals	479.98	33,384.04		33,864.02
<b>Total Supplies</b>	<b>\$2,497.25</b>	<b>\$34,361.99</b>		<b>\$36,859.24</b>
<b>800 Other Objects</b>				
810 Dues and Fees		730.00		730.00
890 Miscellaneous Expenditures		1,195.00		1,195.00
<b>Total Other Objects</b>		<b>\$1,925.00</b>		<b>\$1,925.00</b>
<b>Total 2120 Guidance Services</b>	<b>\$1,046,043.22</b>	<b>\$750,593.74</b>		<b>\$1,796,636.96</b>

**General Fund (10)**

	<u>Elementary</u>	<u>Secondary</u>	<u>Federal</u>	<u>Total</u>
<b>2140 Psychological Services</b>				
<b>100 Personnel Services – Salaries</b>				
100 Personnel Services – Salaries		72,404.47	171,228.03	243,632.50
<b>Total Personnel Services – Salaries</b>		<b>\$72,404.47</b>	<b>\$171,228.03</b>	<b>\$243,632.50</b>
<b>200 Personnel Services – Employee Benefits</b>				
210 Group Insurance – Contracted Provider		190.27	292.59	482.86
220 Social Security Contributions		5,497.38	12,732.59	18,229.97
230 PSERS Retirement Contributions		23,064.05	58,046.30	81,110.35
260 Workers' Compensation		426.63	1,010.74	1,437.37
270 Group Insurance – Self-Insurance			21,802.69	21,802.69
<b>Total Personnel Services – Employee Benefits</b>		<b>\$29,178.33</b>	<b>\$93,884.91</b>	<b>\$123,063.24</b>
<b>300 Purchased Professional and Technical Services</b>				
330 Other Professional Services	45,469.00	37,756.81		83,225.81
<b>Total Purchased Professional and Technical Services</b>	<b>\$45,469.00</b>	<b>\$37,756.81</b>		<b>\$83,225.81</b>
<b>600 Supplies</b>				
610 General Supplies		5,136.08		5,136.08
<b>Total Supplies</b>		<b>\$5,136.08</b>		<b>\$5,136.08</b>
<b>800 Other Objects</b>				
810 Dues and Fees		650.71		650.71
<b>Total Other Objects</b>		<b>\$650.71</b>		<b>\$650.71</b>
<b>Total 2140 Psychological Services</b>	<b>\$45,469.00</b>	<b>\$145,126.40</b>	<b>\$265,112.94</b>	<b>\$455,708.34</b>

**General Fund (10)**

**2160 Social Work Services**

Elementary                      Secondary                      Federal                      Total

<b>100</b>	<b><u>Personnel Services – Salaries</u></b>			
	100 Personnel Services – Salaries			206,112.76
				206,112.76
	<b>Total Personnel Services – Salaries</b>			<b>\$206,112.76</b>
<b>200</b>	<b><u>Personnel Services – Employee Benefits</u></b>			
	210 Group Insurance – Contracted Provider		222.88	222.88
	220 Social Security Contributions		15,419.51	15,419.51
	230 PSERS Retirement Contributions		66,352.47	66,352.47
	260 Workers' Compensation		1,216.19	1,216.19
	270 Group Insurance – Self-Insurance		30,841.44	30,841.44
	<b>Total Personnel Services – Employee Benefits</b>		<b>\$114,052.49</b>	<b>\$114,052.49</b>
<b>300</b>	<b><u>Purchased Professional and Technical Services</u></b>			
	330 Other Professional Services			22,500.00
	<b>Total Purchased Professional and Technical Services</b>			<b>\$22,500.00</b>
<b>500</b>	<b><u>Other Purchased Services</u></b>			
	580 Travel			236.14
	599 Other Miscellaneous Purchased Services		1,106.93	1,106.93
	<b>Total Other Purchased Services</b>		<b>\$1,106.93</b>	<b>\$1,343.07</b>
<b>600</b>	<b><u>Supplies</u></b>			
	610 General Supplies			2,734.17
	640 Books and Periodicals			370.50
	<b>Total Supplies</b>			<b>\$3,104.67</b>
<b>800</b>	<b><u>Other Objects</u></b>			
	810 Dues and Fees		2,000.00	2,000.00
	<b>Total Other Objects</b>		<b>\$2,000.00</b>	<b>\$2,000.00</b>
	<b>Total 2160 Social Work Services</b>		<b>\$323,272.18</b>	<b>\$349,112.99</b>

General Fund (10)

2170 Student Accounting Services

Elementary

Secondary

Federal

Total

100 Personnel Services – Salaries

100 Personnel Services – Salaries

77,769.07

**Total Personnel Services – Salaries**

**\$77,769.07**

200 Personnel Services – Employee Benefits

210 Group Insurance – Contracted Provider

282.46

220 Social Security Contributions

5,813.05

230 PSERS Retirement Contributions

26,441.36

260 Workers' Compensation

458.64

270 Group Insurance – Self-Insurance

10,347.98

**Total Personnel Services – Employee Benefits**

**\$43,343.49**

**Total 2170 Student Accounting Services**

**\$121,112.56**



**General Fund (10)**

**2200 Support Services – Instructional Staff**

	<u>Elementary</u>	<u>Secondary</u>	<u>Federal</u>	<u>Total</u>
<b>100 Personnel Services – Salaries</b>				
100 Personnel Services – Salaries	236,124.82	831,465.50		1,067,590.32
<b>Total Personnel Services – Salaries</b>	<b>\$236,124.82</b>	<b>\$831,465.50</b>		<b>\$1,067,590.32</b>
<b>200 Personnel Services – Employee Benefits</b>				
210 Group Insurance – Contracted Provider	239.17	3,572.82		3,811.99
220 Social Security Contributions	16,733.85	60,494.32		77,228.17
230 PSERS Retirement Contributions	82,608.80	292,029.31		374,638.11
240 Tuition Reimbursement	155,905.00	66,157.40		222,062.40
260 Workers' Compensation	1,391.73	4,904.70		6,296.43
270 Group Insurance – Self-Insurance	52,889.63	174,291.70		227,181.33
291 Other Retirement Plans		3,361.83		3,361.83
<b>Total Personnel Services – Employee Benefits</b>	<b>\$309,768.18</b>	<b>\$604,812.08</b>		<b>\$914,580.26</b>
<b>300 Purchased Professional and Technical Services</b>				
322 Professional Educational Services – lus		6,178.94		6,178.94
330 Other Professional Services		43,977.32	77,156.10	121,133.42
340 Technical Services		1,007.34		1,007.34
360 Employee Training and Development Services	8,709.02	61,307.13		70,016.15
<b>Total Purchased Professional and Technical Services</b>	<b>\$8,709.02</b>	<b>\$112,470.73</b>	<b>\$77,156.10</b>	<b>\$198,335.85</b>
<b>400 Purchased Property Services</b>				
430 Repairs and Maintenance Services		7,096.95		7,096.95
<b>Total Purchased Property Services</b>		<b>\$7,096.95</b>		<b>\$7,096.95</b>
<b>500 Other Purchased Services</b>				
530 Communications	15,509.88	7,504.00		23,013.88
580 Travel	4,694.84	4,217.16		8,912.00
<b>Total Other Purchased Services</b>	<b>\$20,204.72</b>	<b>\$11,721.16</b>		<b>\$31,925.88</b>
<b>600 Supplies</b>				
610 General Supplies	4,270.80	3,947.04		8,217.84
630 Food		12,948.34		12,948.34
640 Books and Periodicals	8,554.75	18,115.58		26,670.33
650 Supplies & Fees – Technology Related	7,581.65	22,417.19		29,998.84
<b>Total Supplies</b>	<b>\$20,407.20</b>	<b>\$57,428.15</b>		<b>\$77,835.35</b>
<b>700 Property</b>				
766 Capitalized Technology Equipment – Replacement		10,276.90		10,276.90
<b>Total Property</b>		<b>\$10,276.90</b>		<b>\$10,276.90</b>
<b>800 Other Objects</b>				
810 Dues and Fees		2,499.48		2,499.48
<b>Total Other Objects</b>		<b>\$2,499.48</b>		<b>\$2,499.48</b>
<b>Total 2200 Support Services – Instructional Staff</b>	<b>\$595,213.94</b>	<b>\$1,637,770.95</b>	<b>\$77,156.10</b>	<b>\$2,310,140.99</b>

**General Fund (10)**

	<u>Elementary</u>	<u>Secondary</u>	<u>Federal</u>	<u>Total</u>
<b>2220 Technology Support Services</b>				
<b>100 Personnel Services – Salaries</b>				
100 Personnel Services – Salaries		225,937.95		225,937.95
<b>Total Personnel Services – Salaries</b>		<b>\$225,937.95</b>		<b>\$225,937.95</b>
<b>200 Personnel Services – Employee Benefits</b>				
210 Group Insurance – Contracted Provider		992.86		992.86
220 Social Security Contributions		16,604.67		16,604.67
230 PSERS Retirement Contributions		83,523.69		83,523.69
260 Workers' Compensation		1,325.29		1,325.29
270 Group Insurance – Self-Insurance		63,152.74		63,152.74
<b>Total Personnel Services – Employee Benefits</b>		<b>\$165,599.25</b>		<b>\$165,599.25</b>
<b>300 Purchased Professional and Technical Services</b>				
340 Technical Services		1,007.34		1,007.34
<b>Total Purchased Professional and Technical Services</b>		<b>\$1,007.34</b>		<b>\$1,007.34</b>
<b>400 Purchased Property Services</b>				
430 Repairs and Maintenance Services		7,096.95		7,096.95
<b>Total Purchased Property Services</b>		<b>\$7,096.95</b>		<b>\$7,096.95</b>
<b>500 Other Purchased Services</b>				
530 Communications	15,509.88	7,504.00		23,013.88
580 Travel		1,390.08		1,390.08
<b>Total Other Purchased Services</b>	<b>\$15,509.88</b>	<b>\$8,894.08</b>		<b>\$24,403.96</b>
<b>600 Supplies</b>				
610 General Supplies	1,377.78	1,574.87		2,952.65
650 Supplies & Fees – Technology Related		2,546.59		2,546.59
<b>Total Supplies</b>	<b>\$1,377.78</b>	<b>\$4,121.46</b>		<b>\$5,499.24</b>
<b>700 Property</b>				
766 Capitalized Technology Equipment – Replacement		10,276.90		10,276.90
<b>Total Property</b>		<b>\$10,276.90</b>		<b>\$10,276.90</b>
<b>Total 2220 Technology Support Services</b>	<b>\$16,887.66</b>	<b>\$422,933.93</b>		<b>\$439,821.59</b>

**General Fund (10)**

**2250 School Library Services**

	<u>Elementary</u>	<u>Secondary</u>	<u>Federal</u>	<u>Total</u>
<b>100 Personnel Services – Salaries</b>				
100 Personnel Services – Salaries	236,124.82	124,362.83		360,487.65
<b>Total Personnel Services – Salaries</b>	<b>\$236,124.82</b>	<b>\$124,362.83</b>		<b>\$360,487.65</b>
<b>200 Personnel Services – Employee Benefits</b>				
210 Group Insurance – Contracted Provider	239.17	75.46		314.63
220 Social Security Contributions	16,733.85	8,349.69		25,083.54
230 PSERS Retirement Contributions	82,608.80	43,522.78		126,131.58
260 Workers' Compensation	1,391.73	734.93		2,126.66
270 Group Insurance – Self-Insurance	52,889.63	46,384.25		99,273.88
<b>Total Personnel Services – Employee Benefits</b>	<b>\$153,863.18</b>	<b>\$99,067.11</b>		<b>\$252,930.29</b>
<b>600 Supplies</b>				
610 General Supplies	2,893.02			2,893.02
640 Books and Periodicals	8,554.75	14,312.20		22,866.95
650 Supplies & Fees – Technology Related	7,581.65	14,261.20		21,842.85
<b>Total Supplies</b>	<b>\$19,029.42</b>	<b>\$28,573.40</b>		<b>\$47,602.82</b>
<b>Total 2250 School Library Services</b>	<b>\$409,017.42</b>	<b>\$252,003.34</b>		<b>\$661,020.76</b>

**General Fund (10)**

**2260 Instruction and Curriculum Development Services**

	<u>Elementary</u>	<u>Secondary</u>	<u>Federal</u>	<u>Total</u>
<b>100 Personnel Services – Salaries</b>				
100 Personnel Services – Salaries		440,823.00		440,823.00
<b>Total Personnel Services – Salaries</b>		<b>\$440,823.00</b>		<b>\$440,823.00</b>
<b>200 Personnel Services – Employee Benefits</b>				
210 Group Insurance – Contracted Provider		2,504.50		2,504.50
220 Social Security Contributions		32,588.08		32,588.08
230 PSERS Retirement Contributions		152,222.85		152,222.85
260 Workers' Compensation		2,608.26		2,608.26
270 Group Insurance – Self-Insurance		64,754.71		64,754.71
291 Other Retirement Plans		3,361.83		3,361.83
<b>Total Personnel Services – Employee Benefits</b>		<b>\$258,040.23</b>		<b>\$258,040.23</b>
<b>300 Purchased Professional and Technical Services</b>				
322 Professional Educational Services – lus		2,669.10		2,669.10
330 Other Professional Services		38,893.32		38,893.32
<b>Total Purchased Professional and Technical Services</b>		<b>\$41,562.42</b>		<b>\$41,562.42</b>
<b>500 Other Purchased Services</b>				
580 Travel		646.21		646.21
<b>Total Other Purchased Services</b>		<b>\$646.21</b>		<b>\$646.21</b>
<b>600 Supplies</b>				
610 General Supplies		493.55		493.55
630 Food		2,147.76		2,147.76
640 Books and Periodicals		661.57		661.57
650 Supplies & Fees – Technology Related		5,609.40		5,609.40
<b>Total Supplies</b>		<b>\$8,912.28</b>		<b>\$8,912.28</b>
<b>800 Other Objects</b>				
810 Dues and Fees		2,499.48		2,499.48
<b>Total Other Objects</b>		<b>\$2,499.48</b>		<b>\$2,499.48</b>
<b>Total 2260 Instruction and Curriculum Development Services</b>		<b>\$752,483.62</b>		<b>\$752,483.62</b>

**General Fund (10)**

**2270 Instructional Staff Professional Development Services**

	<u>Elementary</u>	<u>Secondary</u>	<u>Federal</u>	<u>Total</u>
<b>100 Personnel Services – Salaries</b>				
100 Personnel Services – Salaries		40,341.72		40,341.72
<b>Total Personnel Services – Salaries</b>		<b>\$40,341.72</b>		<b>\$40,341.72</b>
<b>200 Personnel Services – Employee Benefits</b>				
220 Social Security Contributions		2,951.88		2,951.88
230 PSERS Retirement Contributions		12,759.99		12,759.99
240 Tuition Reimbursement	155,905.00	66,157.40		222,062.40
260 Workers' Compensation		236.22		236.22
<b>Total Personnel Services – Employee Benefits</b>	<b>\$155,905.00</b>	<b>\$82,105.49</b>		<b>\$238,010.49</b>
<b>300 Purchased Professional and Technical Services</b>				
322 Professional Educational Services – Ius		3,509.84		3,509.84
330 Other Professional Services			77,156.10	77,156.10
360 Employee Training and Development Services	8,709.02	58,599.13		67,308.15
<b>Total Purchased Professional and Technical Services</b>	<b>\$8,709.02</b>	<b>\$62,108.97</b>	<b>\$77,156.10</b>	<b>\$147,974.09</b>
<b>500 Other Purchased Services</b>				
580 Travel	4,694.84	2,180.87		6,875.71
<b>Total Other Purchased Services</b>	<b>\$4,694.84</b>	<b>\$2,180.87</b>		<b>\$6,875.71</b>
<b>600 Supplies</b>				
610 General Supplies		484.32		484.32
630 Food		10,800.58		10,800.58
640 Books and Periodicals		2,542.41		2,542.41
<b>Total Supplies</b>		<b>\$13,827.31</b>		<b>\$13,827.31</b>
<b>Total 2270 Instructional Staff Professional Development Services</b>	<b>\$169,308.86</b>	<b>\$200,564.36</b>	<b>\$77,156.10</b>	<b>\$447,029.32</b>

General Fund (10)

2280 Nonpublic Support Services

300 Purchased Professional and Technical Services

	<u>Elementary</u>	<u>Secondary</u>	<u>Federal</u>	<u>Total</u>
330 Other Professional Services		5,084.00		5,084.00
360 Employee Training and Development Services		2,708.00		2,708.00
<b>Total Purchased Professional and Technical Services</b>		<b>\$7,792.00</b>		<b>\$7,792.00</b>

600 Supplies

610 General Supplies		1,394.30		1,394.30
640 Books and Periodicals		599.40		599.40

<b>Total Supplies</b>		<b>\$1,993.70</b>		<b>\$1,993.70</b>
<b>Total 2280 Nonpublic Support Services</b>		<b>\$9,785.70</b>		<b>\$9,785.70</b>

**General Fund (10)**

	<u>Elementary</u>	<u>Secondary</u>	<u>Federal</u>	<u>Total</u>
<b>2300 Support Services – Administration</b>				
<b>100 Personnel Services – Salaries</b>				
100 Personnel Services – Salaries	1,014,905.27	496,713.72		2,089,525.99
<b>Total Personnel Services – Salaries</b>	<b>\$1,014,905.27</b>	<b>\$496,713.72</b>		<b>\$2,089,525.99</b>
<b>200 Personnel Services – Employee Benefits</b>				
210 Group Insurance – Contracted Provider	4,770.67	2,404.71		9,580.93
220 Social Security Contributions	74,389.81	35,754.63		151,897.43
230 PSERS Retirement Contributions	343,484.65	166,054.81		700,829.35
260 Workers' Compensation	5,941.32	2,898.12		12,286.80
270 Group Insurance – Self-Insurance	190,988.80	109,170.26		392,717.05
291 Other Retirement Plans	7,733.45	7,725.67		35,220.88
<b>Total Personnel Services – Employee Benefits</b>	<b>\$627,308.70</b>	<b>\$324,008.20</b>		<b>\$1,302,532.44</b>
<b>300 Purchased Professional and Technical Services</b>				
310 Official / Administrative Services				134,315.64
330 Other Professional Services				447,158.78
<b>Total Purchased Professional and Technical Services</b>				<b>\$581,474.42</b>
<b>400 Purchased Property Services</b>				
430 Repairs and Maintenance Services	15,229.16	2,187.61		17,416.77
440 Rentals	4,275.36	4,275.36		10,761.73
<b>Total Purchased Property Services</b>	<b>\$19,504.52</b>	<b>\$6,462.97</b>		<b>\$28,178.50</b>
<b>500 Other Purchased Services</b>				
520 Insurance – General	123.00	123.00		2,060.60
530 Communications	99.00			1,715.03
549 Other Advertising/Public Relations				4,812.76
550 Printing and Binding		953.00		8,921.77
580 Travel	1,013.41			8,942.64
599 Other Miscellaneous Purchased Services	9.98			9.98
<b>Total Other Purchased Services</b>	<b>\$1,245.39</b>	<b>\$1,076.00</b>		<b>\$26,462.78</b>
<b>600 Supplies</b>				
610 General Supplies	8,219.18	10,451.75		39,969.48
630 Food	15,194.10	2,891.52		24,511.21
640 Books and Periodicals	1,021.83			1,265.71
650 Supplies & Fees – Technology Related	402.89			3,894.48
<b>Total Supplies</b>	<b>\$24,838.00</b>	<b>\$13,343.27</b>		<b>\$69,640.88</b>
<b>800 Other Objects</b>				
810 Dues and Fees	4,779.95	4,644.19		50,811.79
<b>Total Other Objects</b>	<b>\$4,779.95</b>	<b>\$4,644.19</b>		<b>\$50,811.79</b>
<b>Total 2300 Support Services – Administration</b>	<b>\$1,692,581.83</b>	<b>\$846,248.35</b>		<b>\$4,148,626.80</b>

General Fund (10)

2310 Board Services

Elementary

Secondary

Federal

Total

**300 Purchased Professional and Technical Services**

330 Other Professional Services

885.04

**Total Purchased Professional and Technical Services**

**\$885.04**

**500 Other Purchased Services**

520 Insurance – General

1,814.60

549 Other Advertising/Public Relations

3,689.22

580 Travel

403.30

**Total Other Purchased Services**

**\$5,907.12**

**800 Other Objects**

810 Dues and Fees

24,720.68

**Total Other Objects**

**\$24,720.68**

**Total 2310 Board Services**

**\$31,512.84**



**General Fund (10)**

	<u>Elementary</u>	<u>Secondary</u>	<u>Federal</u>	<u>Total</u>
<b>2330 Tax Assessment and Collection Services</b>				
<b>100 Personnel Services – Salaries</b>				
100 Personnel Services – Salaries				12,340.64
<b>Total Personnel Services – Salaries</b>				<b>\$12,340.64</b>
<b>200 Personnel Services – Employee Benefits</b>				
220 Social Security Contributions				944.06
260 Workers' Compensation				72.80
<b>Total Personnel Services – Employee Benefits</b>				<b>\$1,016.86</b>
<b>300 Purchased Professional and Technical Services</b>				
310 Official / Administrative Services				128,396.64
<b>Total Purchased Professional and Technical Services</b>				<b>\$128,396.64</b>
<b>500 Other Purchased Services</b>				
530 Communications				1,616.03
550 Printing and Binding				927.80
<b>Total Other Purchased Services</b>				<b>\$2,543.83</b>
<b>Total 2330 Tax Assessment and Collection Services</b>				<b>\$144,297.97</b>

**General Fund (10)**

**2340 Staff Relations and Negotiations Services**

Elementary                      Secondary                      Federal                      Total

<b>100</b>	<b><u>Personnel Services – Salaries</u></b>			
	100 Personnel Services – Salaries			82,400.00
<b>Total Personnel Services – Salaries</b>				<b>\$82,400.00</b>
<b>200</b>	<b><u>Personnel Services – Employee Benefits</u></b>			
	210 Group Insurance – Contracted Provider			239.42
	220 Social Security Contributions			6,335.49
	230 PSERS Retirement Contributions			28,015.96
	260 Workers' Compensation			506.17
	270 Group Insurance – Self-Insurance			18,886.54
<b>Total Personnel Services – Employee Benefits</b>				<b>\$53,983.58</b>
<b>300</b>	<b><u>Purchased Professional and Technical Services</u></b>			
	330 Other Professional Services			349,992.90
<b>Total Purchased Professional and Technical Services</b>				<b>\$349,992.90</b>
<b>500</b>	<b><u>Other Purchased Services</u></b>			
	549 Other Advertising/Public Relations			1,123.54
	580 Travel			93.28
<b>Total Other Purchased Services</b>				<b>\$1,216.82</b>
<b>600</b>	<b><u>Supplies</u></b>			
	610 General Supplies			447.06
	630 Food			127.50
	650 Supplies & Fees – Technology Related			2,495.59
<b>Total Supplies</b>				<b>\$3,070.15</b>
<b>800</b>	<b><u>Other Objects</u></b>			
	810 Dues and Fees			7,974.50
<b>Total Other Objects</b>				<b>\$7,974.50</b>
<b>Total 2340 Staff Relations and Negotiations Services</b>				<b>\$498,637.95</b>

General Fund (10)

2350 Legal and Accounting Services

Elementary

Secondary

Federal

Total

300 Purchased Professional and Technical Services

310 Official / Administrative Services

5,919.00

330 Other Professional Services

72,306.36

**Total Purchased Professional and Technical Services**

**\$78,225.36**

**Total 2350 Legal and Accounting Services**

**\$78,225.36**

**General Fund (10)**

	<u>Elementary</u>	<u>Secondary</u>	<u>Federal</u>	<u>Total</u>
<b>2360 Office of the Superintendent / Executive Director Services</b>				
<b>100 <u>Personnel Services – Salaries</u></b>				
100 Personnel Services – Salaries				483,166.36
<b>Total Personnel Services – Salaries</b>				<b>\$483,166.36</b>
<b>200 <u>Personnel Services – Employee Benefits</u></b>				
210 Group Insurance – Contracted Provider				2,166.13
220 Social Security Contributions				34,473.44
230 PSERS Retirement Contributions				163,273.93
260 Workers' Compensation				2,868.39
270 Group Insurance – Self-Insurance				73,671.45
291 Other Retirement Plans				19,761.76
<b>Total Personnel Services – Employee Benefits</b>				<b>\$296,215.10</b>
<b>300 <u>Purchased Professional and Technical Services</u></b>				
330 Other Professional Services				17,310.59
<b>Total Purchased Professional and Technical Services</b>				<b>\$17,310.59</b>
<b>500 <u>Other Purchased Services</u></b>				
550 Printing and Binding				3,542.12
580 Travel				7,432.65
<b>Total Other Purchased Services</b>				<b>\$10,974.77</b>
<b>600 <u>Supplies</u></b>				
610 General Supplies				4,478.44
630 Food				6,298.09
640 Books and Periodicals				243.88
650 Supplies & Fees – Technology Related				996.00
<b>Total Supplies</b>				<b>\$12,016.41</b>
<b>800 <u>Other Objects</u></b>				
810 Dues and Fees				8,692.47
<b>Total Other Objects</b>				<b>\$8,692.47</b>
<b>Total 2360 Office of the Superintendent / Executive Director Services</b>				<b>\$828,375.70</b>

**General Fund (10)**

	<u>Elementary</u>	<u>Secondary</u>	<u>Federal</u>	<u>Total</u>
<b>2380 Office of the Principal Services</b>				
<b>100 Personnel Services – Salaries</b>				
100 Personnel Services – Salaries	1,014,905.27	496,713.72		1,511,618.99
<b>Total Personnel Services – Salaries</b>	<b>\$1,014,905.27</b>	<b>\$496,713.72</b>		<b>\$1,511,618.99</b>
<b>200 Personnel Services – Employee Benefits</b>				
210 Group Insurance – Contracted Provider	4,770.67	2,404.71		7,175.38
220 Social Security Contributions	74,389.81	35,754.63		110,144.44
230 PSERS Retirement Contributions	343,484.65	166,054.81		509,539.46
260 Workers' Compensation	5,941.32	2,898.12		8,839.44
270 Group Insurance – Self-Insurance	190,988.80	109,170.26		300,159.06
291 Other Retirement Plans	7,733.45	7,725.67		15,459.12
<b>Total Personnel Services – Employee Benefits</b>	<b>\$627,308.70</b>	<b>\$324,008.20</b>		<b>\$951,316.90</b>
<b>400 Purchased Property Services</b>				
430 Repairs and Maintenance Services	15,229.16	2,187.61		17,416.77
440 Rentals	4,275.36	4,275.36		8,550.72
<b>Total Purchased Property Services</b>	<b>\$19,504.52</b>	<b>\$6,462.97</b>		<b>\$25,967.49</b>
<b>500 Other Purchased Services</b>				
520 Insurance – General	123.00	123.00		246.00
530 Communications	99.00			99.00
550 Printing and Binding		953.00		953.00
580 Travel	1,013.41			1,013.41
599 Other Miscellaneous Purchased Services	9.98			9.98
<b>Total Other Purchased Services</b>	<b>\$1,245.39</b>	<b>\$1,076.00</b>		<b>\$2,321.39</b>
<b>600 Supplies</b>				
610 General Supplies	8,219.18	10,451.75		18,670.93
630 Food	15,194.10	2,891.52		18,085.62
640 Books and Periodicals	1,021.83			1,021.83
650 Supplies & Fees – Technology Related	402.89			402.89
<b>Total Supplies</b>	<b>\$24,838.00</b>	<b>\$13,343.27</b>		<b>\$38,181.27</b>
<b>800 Other Objects</b>				
810 Dues and Fees	4,779.95	4,644.19		9,424.14
<b>Total Other Objects</b>	<b>\$4,779.95</b>	<b>\$4,644.19</b>		<b>\$9,424.14</b>
<b>Total 2380 Office of the Principal Services</b>	<b>\$1,692,581.83</b>	<b>\$846,248.35</b>		<b>\$2,538,830.18</b>

General Fund (10)

2390 Other Administration Services

Elementary

Secondary

Federal

Total

300 Purchased Professional and Technical Services

330 Other Professional Services

6,663.89

**Total Purchased Professional and Technical Services**

**\$6,663.89**

400 Purchased Property Services

440 Rentals

2,211.01

**Total Purchased Property Services**

**\$2,211.01**

500 Other Purchased Services

550 Printing and Binding

3,498.85

**Total Other Purchased Services**

**\$3,498.85**

600 Supplies

610 General Supplies

16,373.05

**Total Supplies**

**\$16,373.05**

**Total 2390 Other Administration Services**

**\$28,746.80**

**General Fund (10)**

**2400 Support Services – Pupil Health**

Elementary                      Secondary                      Federal                      Total

**100 Personnel Services – Salaries**

100 Personnel Services – Salaries 322,039.68

**Total Personnel Services – Salaries \$322,039.68**

**200 Personnel Services – Employee Benefits**

210 Group Insurance – Contracted Provider 467.52

220 Social Security Contributions 22,660.86

230 PSERS Retirement Contributions 114,119.02

260 Workers' Compensation 1,841.48

270 Group Insurance – Self-Insurance 119,510.70

**Total Personnel Services – Employee Benefits \$258,599.58**

**300 Purchased Professional and Technical Services**

310 Official / Administrative Services 750.00

322 Professional Educational Services – lus 159,875.92

330 Other Professional Services 85,521.95

**Total Purchased Professional and Technical Services \$246,147.87**

**600 Supplies**

610 General Supplies 10,712.34

**Total Supplies \$10,712.34**

**700 Property**

762 Capitalized Equipment - Replacement 3,299.90

**Total Property \$3,299.90**

**800 Other Objects**

810 Dues and Fees 490.00

**Total Other Objects \$490.00**

**Total 2400 Support Services – Pupil Health \$841,289.37**

General Fund (10)

	<u>Elementary</u>	<u>Secondary</u>	<u>Federal</u>	<u>Total</u>
<b>2410 Supervision of Health Services</b>				
<b>100 Personnel Services – Salaries</b>				
100 Personnel Services – Salaries				6,556.41
<b>Total Personnel Services – Salaries</b>				<b>\$6,556.41</b>
<b>200 Personnel Services – Employee Benefits</b>				
210 Group Insurance – Contracted Provider				44.00
220 Social Security Contributions				483.49
230 PSERS Retirement Contributions				2,229.24
260 Workers' Compensation				38.48
270 Group Insurance – Self-Insurance				1,089.78
<b>Total Personnel Services – Employee Benefits</b>				<b>\$3,884.99</b>
<b>Total 2410 Supervision of Health Services</b>				<b>\$10,441.40</b>



General Fund (10)

2411 Supervision of Health Services – Head of Component

Elementary

Secondary

Federal

Total

100 Personnel Services – Salaries

100 Personnel Services – Salaries

6,556.41

**Total Personnel Services – Salaries**

**\$6,556.41**

200 Personnel Services – Employee Benefits

210 Group Insurance – Contracted Provider

44.00

220 Social Security Contributions

483.49

230 PSERS Retirement Contributions

2,229.24

260 Workers' Compensation

38.48

270 Group Insurance – Self-Insurance

1,089.78

**Total Personnel Services – Employee Benefits**

**\$3,884.99**

**Total 2411 Supervision of Health Services – Head of Component**

**\$10,441.40**

General Fund (10)

2420 Medical Services

Elementary

Secondary

Federal

Total

300 Purchased Professional and Technical Services

322 Professional Educational Services – lus

159,875.92

**Total Purchased Professional and Technical Services**

**\$159,875.92**

**Total 2420 Medical Services**

**\$159,875.92**

**General Fund (10)**

**2440 Nursing Services**

	<u>Elementary</u>	<u>Secondary</u>	<u>Federal</u>	<u>Total</u>
<b>100 Personnel Services – Salaries</b>				
100 Personnel Services – Salaries				315,483.27
<b>Total Personnel Services – Salaries</b>				<b>\$315,483.27</b>
<b>200 Personnel Services – Employee Benefits</b>				
210 Group Insurance – Contracted Provider				423.52
220 Social Security Contributions				22,177.37
230 PSERS Retirement Contributions				111,889.78
260 Workers' Compensation				1,803.00
270 Group Insurance – Self-Insurance				118,420.92
<b>Total Personnel Services – Employee Benefits</b>				<b>\$254,714.59</b>
<b>300 Purchased Professional and Technical Services</b>				
310 Official / Administrative Services				750.00
330 Other Professional Services				85,521.95
<b>Total Purchased Professional and Technical Services</b>				<b>\$86,271.95</b>
<b>600 Supplies</b>				
610 General Supplies				10,712.34
<b>Total Supplies</b>				<b>\$10,712.34</b>
<b>700 Property</b>				
762 Capitalized Equipment - Replacement				3,299.90
<b>Total Property</b>				<b>\$3,299.90</b>
<b>800 Other Objects</b>				
810 Dues and Fees				490.00
<b>Total Other Objects</b>				<b>\$490.00</b>
<b>Total 2440 Nursing Services</b>				<b>\$670,972.05</b>

**General Fund (10)**

	<u>Elementary</u>	<u>Secondary</u>	<u>Federal</u>	<u>Total</u>
<b>2500 Support Services – Business</b>				
<b>100 Personnel Services – Salaries</b>				
100 Personnel Services – Salaries				439,660.21
<b>Total Personnel Services – Salaries</b>				<b>\$439,660.21</b>
<b>200 Personnel Services – Employee Benefits</b>				
210 Group Insurance – Contracted Provider				1,622.14
220 Social Security Contributions				32,712.17
230 PSERS Retirement Contributions				149,400.73
260 Workers' Compensation				2,604.42
270 Group Insurance – Self-Insurance				58,789.76
291 Other Retirement Plans				3,500.00
<b>Total Personnel Services – Employee Benefits</b>				<b>\$248,629.22</b>
<b>300 Purchased Professional and Technical Services</b>				
310 Official / Administrative Services				748.98
330 Other Professional Services				125,319.25
<b>Total Purchased Professional and Technical Services</b>				<b>\$126,068.23</b>
<b>400 Purchased Property Services</b>				
430 Repairs and Maintenance Services				3,129.98
440 Rentals				5,934.48
<b>Total Purchased Property Services</b>				<b>\$9,064.46</b>
<b>500 Other Purchased Services</b>				
530 Communications				12,059.05
580 Travel				843.16
<b>Total Other Purchased Services</b>				<b>\$12,902.21</b>
<b>600 Supplies</b>				
610 General Supplies				10,723.55
630 Food				300.96
640 Books and Periodicals				30.90
650 Supplies & Fees – Technology Related				47,332.22
<b>Total Supplies</b>				<b>\$58,387.63</b>
<b>700 Property</b>				
762 Capitalized Equipment - Replacement				7,492.67
<b>Total Property</b>				<b>\$7,492.67</b>
<b>800 Other Objects</b>				
810 Dues and Fees				49,326.58
<b>Total Other Objects</b>				<b>\$49,326.58</b>
<b>Total 2500 Support Services – Business</b>				<b>\$951,531.21</b>

**General Fund (10)**

	<u>Elementary</u>	<u>Secondary</u>	<u>Federal</u>	<u>Total</u>
<b>2510 Fiscal Services</b>				
<b>100 Personnel Services – Salaries</b>				
100 Personnel Services – Salaries				439,660.21
<b>Total Personnel Services – Salaries</b>				<b>\$439,660.21</b>
<b>200 Personnel Services – Employee Benefits</b>				
210 Group Insurance – Contracted Provider				1,622.14
220 Social Security Contributions				32,712.17
230 PSERS Retirement Contributions				149,400.73
260 Workers' Compensation				2,604.42
270 Group Insurance – Self-Insurance				58,789.76
291 Other Retirement Plans				3,500.00
<b>Total Personnel Services – Employee Benefits</b>				<b>\$248,629.22</b>
<b>300 Purchased Professional and Technical Services</b>				
310 Official / Administrative Services				748.98
<b>Total Purchased Professional and Technical Services</b>				<b>\$748.98</b>
<b>400 Purchased Property Services</b>				
430 Repairs and Maintenance Services				3,129.98
440 Rentals				5,934.48
<b>Total Purchased Property Services</b>				<b>\$9,064.46</b>
<b>500 Other Purchased Services</b>				
530 Communications				12,059.05
580 Travel				843.16
<b>Total Other Purchased Services</b>				<b>\$12,902.21</b>
<b>600 Supplies</b>				
630 Food				300.96
640 Books and Periodicals				30.90
<b>Total Supplies</b>				<b>\$331.86</b>
<b>700 Property</b>				
762 Capitalized Equipment - Replacement				7,492.67
<b>Total Property</b>				<b>\$7,492.67</b>
<b>Total 2510 Fiscal Services</b>				<b>\$718,829.61</b>

**General Fund (10)**

	<u>Elementary</u>	<u>Secondary</u>	<u>Federal</u>	<u>Total</u>
<b>2511 Supervision of Fiscal Services - Head of Component</b>				
<b>100 Personnel Services – Salaries</b>				
100 Personnel Services – Salaries				308,088.21
<b>Total Personnel Services – Salaries</b>				<b>\$308,088.21</b>
<b>200 Personnel Services – Employee Benefits</b>				
210 Group Insurance – Contracted Provider				1,168.41
220 Social Security Contributions				23,062.17
230 PSERS Retirement Contributions				104,666.24
260 Workers' Compensation				1,828.07
270 Group Insurance – Self-Insurance				31,850.02
291 Other Retirement Plans				3,500.00
<b>Total Personnel Services – Employee Benefits</b>				<b>\$166,074.91</b>
<b>300 Purchased Professional and Technical Services</b>				
310 Official / Administrative Services				748.98
<b>Total Purchased Professional and Technical Services</b>				<b>\$748.98</b>
<b>400 Purchased Property Services</b>				
430 Repairs and Maintenance Services				3,129.98
440 Rentals				5,934.48
<b>Total Purchased Property Services</b>				<b>\$9,064.46</b>
<b>500 Other Purchased Services</b>				
530 Communications				12,059.05
580 Travel				843.16
<b>Total Other Purchased Services</b>				<b>\$12,902.21</b>
<b>600 Supplies</b>				
630 Food				300.96
640 Books and Periodicals				30.90
<b>Total Supplies</b>				<b>\$331.86</b>
<b>700 Property</b>				
762 Capitalized Equipment - Replacement				7,492.67
<b>Total Property</b>				<b>\$7,492.67</b>
<b>Total 2511 Supervision of Fiscal Services - Head of Component</b>				<b>\$504,703.30</b>

General Fund (10)

2514 Payroll Services

100 Personnel Services – Salaries

100 Personnel Services – Salaries 60,000.00

**Total Personnel Services – Salaries \$60,000.00**

200 Personnel Services – Employee Benefits

210 Group Insurance – Contracted Provider 121.82

220 Social Security Contributions 4,365.02

230 PSERS Retirement Contributions 20,400.05

260 Workers' Compensation 354.11

270 Group Insurance – Self-Insurance 18,886.54

**Total Personnel Services – Employee Benefits \$44,127.54**

**Total 2514 Payroll Services \$104,127.54**

Elementary

Secondary

Federal

Total

General Fund (10)

2515 Financial Accounting Services

Elementary

Secondary

Federal

Total

100 Personnel Services – Salaries

100 Personnel Services – Salaries

71,572.00

**Total Personnel Services – Salaries**

**\$71,572.00**

200 Personnel Services – Employee Benefits

210 Group Insurance – Contracted Provider

331.91

220 Social Security Contributions

5,284.98

230 PSERS Retirement Contributions

24,334.44

260 Workers' Compensation

422.24

270 Group Insurance – Self-Insurance

8,053.20

**Total Personnel Services – Employee Benefits**

**\$38,426.77**

**Total 2515 Financial Accounting Services**

**\$109,998.77**



General Fund (10)

2590 Other Support Services – Business

Elementary

Secondary

Federal

Total

300 Purchased Professional and Technical Services

330 Other Professional Services

125,319.25

**Total Purchased Professional and Technical Services**

**\$125,319.25**

600 Supplies

610 General Supplies

10,723.55

650 Supplies & Fees – Technology Related

47,332.22

**Total Supplies**

**\$58,055.77**

800 Other Objects

810 Dues and Fees

49,326.58

**Total Other Objects**

**\$49,326.58**

**Total 2590 Other Support Services – Business**

**\$232,701.60**



General Fund (10)

2610 Supervision of Operation and Maintenance of Plant Services

Elementary

Secondary

Federal

Total

100 Personnel Services – Salaries

100 Personnel Services – Salaries

107,834.00

**Total Personnel Services – Salaries**

**\$107,834.00**

200 Personnel Services – Employee Benefits

210 Group Insurance – Contracted Provider

640.20

220 Social Security Contributions

8,042.07

230 PSERS Retirement Contributions

36,663.57

270 Group Insurance – Self-Insurance

21,796.28

291 Other Retirement Plans

874.43

**Total Personnel Services – Employee Benefits**

**\$68,016.55**

**Total 2610 Supervision of Operation and Maintenance of Plant Services**

**\$175,850.55**

General Fund (10)

2611 Supervision of Operation and Maintenance of Plant Services – Head of Component

Elementary

Secondary

Federal

Total

100 Personnel Services – Salaries

100 Personnel Services – Salaries

107,834.00

**Total Personnel Services – Salaries**

**\$107,834.00**

200 Personnel Services – Employee Benefits

210 Group Insurance – Contracted Provider

640.20

220 Social Security Contributions

8,042.07

230 PSERS Retirement Contributions

36,663.57

270 Group Insurance – Self-Insurance

21,796.28

291 Other Retirement Plans

874.43

**Total Personnel Services – Employee Benefits**

**\$68,016.55**

**Total 2611 Supervision of Operation and Maintenance of Plant Services – Head of Component**

**\$175,850.55**

**General Fund (10)**

**2620 Operation of Buildings Services**

Elementary                      Secondary                      Federal                      Total

<b>100</b>	<b><u>Personnel Services – Salaries</u></b>			
	100 Personnel Services – Salaries			1,169,899.04
<b>Total Personnel Services – Salaries</b>				<b>\$1,169,899.04</b>
<b>200</b>	<b><u>Personnel Services – Employee Benefits</u></b>			
	210 Group Insurance – Contracted Provider			3,287.74
	220 Social Security Contributions			86,312.08
	230 PSERS Retirement Contributions			404,233.61
	250 Unemployment Compensation			2,187.96
	260 Workers' Compensation			6,765.86
	270 Group Insurance – Self-Insurance			314,176.60
	291 Other Retirement Plans			2,522.21
<b>Total Personnel Services – Employee Benefits</b>				<b>\$819,486.06</b>
<b>300</b>	<b><u>Purchased Professional and Technical Services</u></b>			
	330 Other Professional Services			4,541.35
<b>Total Purchased Professional and Technical Services</b>				<b>\$4,541.35</b>
<b>400</b>	<b><u>Purchased Property Services</u></b>			
	410 Cleaning Services			70,052.07
	420 Utility Services			67,775.36
	430 Repairs and Maintenance Services			296,931.54
	440 Rentals			6,510.23
	460 Extermination Services			9,513.77
<b>Total Purchased Property Services</b>				<b>\$450,782.97</b>
<b>500</b>	<b><u>Other Purchased Services</u></b>			
	522 Automotive Liability Insurance			11,535.00
	523 General Property and Liability Insurance			19,359.00
	529 Other Insurance			128,505.00
	580 Travel			456.77
<b>Total Other Purchased Services</b>				<b>\$159,855.77</b>
<b>600</b>	<b><u>Supplies</u></b>			
	610 General Supplies	71,944.65	368,294.82	440,239.47
	620 Energy			720,971.94
	630 Food			534.95
	650 Supplies & Fees – Technology Related			14,941.21
<b>Total Supplies</b>		<b>\$71,944.65</b>	<b>\$368,294.82</b>	<b>\$1,176,687.57</b>
<b>700</b>	<b><u>Property</u></b>			
	752 Capital Equipment – Original and Additional			9,945.00
	762 Capitalized Equipment - Replacement			1,863.91
<b>Total Property</b>				<b>\$11,808.91</b>
<b>800</b>	<b><u>Other Objects</u></b>			
	810 Dues and Fees			980.00
<b>Total Other Objects</b>				<b>\$980.00</b>
<b>Total 2620 Operation of Buildings Services</b>		<b>\$71,944.65</b>	<b>\$368,294.82</b>	<b>\$3,794,041.67</b>

**General Fund (10)**

	<u>Elementary</u>	<u>Secondary</u>	<u>Federal</u>	<u>Total</u>
<b>2630 Care and Upkeep of Grounds Services</b>				
<b>100 Personnel Services – Salaries</b>				
100 Personnel Services – Salaries				102,825.82
<b>Total Personnel Services – Salaries</b>				<b>\$102,825.82</b>
<b>200 Personnel Services – Employee Benefits</b>				
210 Group Insurance – Contracted Provider				446.40
220 Social Security Contributions				7,565.70
230 PSERS Retirement Contributions				34,454.30
260 Workers' Compensation				603.33
270 Group Insurance – Self-Insurance				27,916.83
<b>Total Personnel Services – Employee Benefits</b>				<b>\$70,986.56</b>
<b>400 Purchased Property Services</b>				
410 Cleaning Services				8,460.00
430 Repairs and Maintenance Services				12,850.00
<b>Total Purchased Property Services</b>				<b>\$21,310.00</b>
<b>600 Supplies</b>				
610 General Supplies		11,577.43		11,577.43
<b>Total Supplies</b>		<b>\$11,577.43</b>		<b>\$11,577.43</b>
<b>Total 2630 Care and Upkeep of Grounds Services</b>		<b>\$11,577.43</b>		<b>\$206,699.81</b>

General Fund (10)

2640 Care and Upkeep of Equipment Services

Elementary

Secondary

Federal

Total

600 Supplies

610 General Supplies

4,213.65

4,213.65

**Total Supplies**

**\$4,213.65**

**\$4,213.65**

**Total 2640 Care and Upkeep of Equipment Services**

**\$4,213.65**

**\$4,213.65**

General Fund (10)

	<u>Elementary</u>	<u>Secondary</u>	<u>Federal</u>	<u>Total</u>
<b>2650 Vehicle Operation and Maintenance Services (Other Than Student Transportation Vehicles)</b>				
<b>600 Supplies</b>				
610 General Supplies		8,241.12		8,241.12
<b>Total Supplies</b>		<b>\$8,241.12</b>		<b>\$8,241.12</b>
<b>Total 2650 Vehicle Operation and Maintenance Services (Other Than Student Transportation Vehicles)</b>		<b>\$8,241.12</b>		<b>\$8,241.12</b>



General Fund (10)

2660 Safety and Security Services

Elementary

Secondary

Federal

Total

100 Personnel Services – Salaries

100 Personnel Services – Salaries

7,993.42

**Total Personnel Services – Salaries**

**\$7,993.42**

200 Personnel Services – Employee Benefits

210 Group Insurance – Contracted Provider

26.78

220 Social Security Contributions

593.97

230 PSERS Retirement Contributions

2,717.77

260 Workers' Compensation

47.06

270 Group Insurance – Self-Insurance

1,089.78

291 Other Retirement Plans

112.18

**Total Personnel Services – Employee Benefits**

**\$4,587.54**

**Total 2660 Safety and Security Services**

**\$12,580.96**

**General Fund (10)**

	<u>Elementary</u>	<u>Secondary</u>	<u>Federal</u>	<u>Total</u>
<b>2700 Student Transportation Services</b>				
<b>100 Personnel Services – Salaries</b>				
100 Personnel Services – Salaries				38,432.87
<b>Total Personnel Services – Salaries</b>				<b>\$38,432.87</b>
<b>200 Personnel Services – Employee Benefits</b>				
210 Group Insurance – Contracted Provider				220.92
220 Social Security Contributions				2,887.31
230 PSERS Retirement Contributions				13,067.06
260 Workers' Compensation				226.72
270 Group Insurance – Self-Insurance				3,745.11
<b>Total Personnel Services – Employee Benefits</b>				<b>\$20,147.12</b>
<b>500 Other Purchased Services</b>				
511 Student Transportation Services from Another LEA Within the State				636,940.11
513 Contracted Carriers				1,836,517.97
516 Student Transportation Services From the IU				83,560.53
<b>Total Other Purchased Services</b>				<b>\$2,557,018.61</b>
<b>600 Supplies</b>				
620 Energy				183,991.60
630 Food				255.00
650 Supplies & Fees – Technology Related				3,650.00
<b>Total Supplies</b>				<b>\$187,896.60</b>
<b>800 Other Objects</b>				
810 Dues and Fees				50.00
<b>Total Other Objects</b>				<b>\$50.00</b>
<b>Total 2700 Student Transportation Services</b>				<b>\$2,803,545.20</b>

General Fund (10)

2710 Supervision of Student Transportation Services

Elementary

Secondary

Federal

Total

100 Personnel Services – Salaries

100 Personnel Services – Salaries

38,432.87

**Total Personnel Services – Salaries**

**\$38,432.87**

200 Personnel Services – Employee Benefits

210 Group Insurance – Contracted Provider

220.92

220 Social Security Contributions

2,887.31

230 PSERS Retirement Contributions

13,067.06

260 Workers' Compensation

226.72

270 Group Insurance – Self-Insurance

3,745.11

**Total Personnel Services – Employee Benefits**

**\$20,147.12**

**Total 2710 Supervision of Student Transportation Services**

**\$58,579.99**

General Fund (10)

2711 Supervision of Student Transportation Services – Head of Component

Elementary

Secondary

Federal

Total

100 Personnel Services – Salaries

100 Personnel Services – Salaries

38,432.87

**Total Personnel Services – Salaries**

**\$38,432.87**

200 Personnel Services – Employee Benefits

210 Group Insurance – Contracted Provider

220.92

220 Social Security Contributions

2,887.31

230 PSERS Retirement Contributions

13,067.06

260 Workers' Compensation

226.72

270 Group Insurance – Self-Insurance

3,745.11

**Total Personnel Services – Employee Benefits**

**\$20,147.12**

**Total 2711 Supervision of Student Transportation Services – Head of Component**

**\$58,579.99**

**General Fund (10)**

**2720 Vehicle Operation Services**

Elementary                      Secondary                      Federal                      Total

**500 Other Purchased Services**

511 Student Transportation Services from Another LEA Within the State				636,940.11
513 Contracted Carriers				1,506,600.48
516 Student Transportation Services From the IU				83,560.53

**Total Other Purchased Services** **\$2,227,101.12**

**600 Supplies**

620 Energy				183,991.60
630 Food				255.00
650 Supplies & Fees – Technology Related				3,650.00

**Total Supplies** **\$187,896.60**

**800 Other Objects**

810 Dues and Fees				50.00
-------------------	--	--	--	-------

**Total Other Objects** **\$50.00**

**Total 2720 Vehicle Operation Services** **\$2,415,047.72**

General Fund (10)

2750 Nonpublic Transportation

Elementary

Secondary

Federal

Total

500 Other Purchased Services

513 Contracted Carriers

329,917.49

**Total Other Purchased Services**

**\$329,917.49**

**Total 2750 Nonpublic Transportation**

**\$329,917.49**

**General Fund (10)**

	<u>Elementary</u>	<u>Secondary</u>	<u>Federal</u>	<u>Total</u>
<b>2800 Support Services – Central</b>				
<b>100 Personnel Services – Salaries</b>				
100 Personnel Services – Salaries				144,413.00
<b>Total Personnel Services – Salaries</b>				<b>\$144,413.00</b>
<b>200 Personnel Services – Employee Benefits</b>				
210 Group Insurance – Contracted Provider				953.54
220 Social Security Contributions				10,877.91
230 PSERS Retirement Contributions				49,100.45
240 Tuition Reimbursement				31,660.50
260 Workers' Compensation				852.02
270 Group Insurance – Self-Insurance				19,052.86
291 Other Retirement Plans				3,081.02
<b>Total Personnel Services – Employee Benefits</b>				<b>\$115,578.30</b>
<b>300 Purchased Professional and Technical Services</b>				
360 Employee Training and Development Services				23,807.80
<b>Total Purchased Professional and Technical Services</b>				<b>\$23,807.80</b>
<b>400 Purchased Property Services</b>				
430 Repairs and Maintenance Services				5,500.00
<b>Total Purchased Property Services</b>				<b>\$5,500.00</b>
<b>500 Other Purchased Services</b>				
530 Communications				32,244.43
580 Travel				2,483.73
<b>Total Other Purchased Services</b>				<b>\$34,728.16</b>
<b>600 Supplies</b>				
650 Supplies & Fees – Technology Related				89,936.11
<b>Total Supplies</b>				<b>\$89,936.11</b>
<b>700 Property</b>				
756 Capitalized Technology Equipment – Original				3,199.00
<b>Total Property</b>				<b>\$3,199.00</b>
<b>800 Other Objects</b>				
810 Dues and Fees				130.00
<b>Total Other Objects</b>				<b>\$130.00</b>
<b>Total 2800 Support Services – Central</b>				<b>\$417,292.37</b>





General Fund (10)

2820 Information Services

Elementary

Secondary

Federal

Total

400 Purchased Property Services

430 Repairs and Maintenance Services

5,500.00

**Total Purchased Property Services**

**\$5,500.00**

500 Other Purchased Services

530 Communications

32,244.43

**Total Other Purchased Services**

**\$32,244.43**

600 Supplies

650 Supplies & Fees – Technology Related

89,811.11

**Total Supplies**

**\$89,811.11**

700 Property

756 Capitalized Technology Equipment – Original

3,199.00

**Total Property**

**\$3,199.00**

**Total 2820 Information Services**

**\$130,754.54**

General Fund (10)

2823 Public Information Services

Elementary

Secondary

Federal

Total

500 Other Purchased Services

530 Communications

32,244.43

**Total Other Purchased Services**

**\$32,244.43**

600 Supplies

650 Supplies & Fees – Technology Related

646.99

**Total Supplies**

**\$646.99**

700 Property

756 Capitalized Technology Equipment – Original

3,199.00

**Total Property**

**\$3,199.00**

**Total 2823 Public Information Services**

**\$36,090.42**

General Fund (10)

	<u>Elementary</u>	<u>Secondary</u>	<u>Federal</u>	<u>Total</u>
<b>2824 Management Information Services</b>				
<b>400 <u>Purchased Property Services</u></b>				
430 Repairs and Maintenance Services				5,500.00
<b>Total Purchased Property Services</b>				<b>\$5,500.00</b>
<b>600 <u>Supplies</u></b>				
650 Supplies & Fees – Technology Related				89,164.12
<b>Total Supplies</b>				<b>\$89,164.12</b>
<b>Total 2824 Management Information Services</b>				<b>\$94,664.12</b>

General Fund (10)

2830 Staff Services

Elementary

Secondary

Federal

Total

200 Personnel Services – Employee Benefits

240 Tuition Reimbursement

31,660.50

**Total Personnel Services – Employee Benefits**

**\$31,660.50**

300 Purchased Professional and Technical Services

360 Employee Training and Development Services

23,807.80

**Total Purchased Professional and Technical Services**

**\$23,807.80**

500 Other Purchased Services

580 Travel

2,483.73

**Total Other Purchased Services**

**\$2,483.73**

**Total 2830 Staff Services**

**\$57,952.03**

General Fund (10)

	<u>Elementary</u>	<u>Secondary</u>	<u>Federal</u>	<u>Total</u>
<b>2834 Staff Development Services – Non-Instructional, Certified Staff Only</b>				
<b>200 Personnel Services – Employee Benefits</b>				
240 Tuition Reimbursement				31,660.50
<b>Total Personnel Services – Employee Benefits</b>				<b>\$31,660.50</b>
<b>300 Purchased Professional and Technical Services</b>				
360 Employee Training and Development Services				13,598.40
<b>Total Purchased Professional and Technical Services</b>				<b>\$13,598.40</b>
<b>500 Other Purchased Services</b>				
580 Travel				1,339.93
<b>Total Other Purchased Services</b>				<b>\$1,339.93</b>
<b>Total 2834 Staff Development Services – Non-Instructional, Certified Staff Only</b>				<b>\$46,598.83</b>

General Fund (10)

	<u>Elementary</u>	<u>Secondary</u>	<u>Federal</u>	<u>Total</u>
<b>2836 Staff Development Services – Non-Instructional, Non-Certified Staff Only</b>				
<b>300 <u>Purchased Professional and Technical Services</u></b>				
360 Employee Training and Development Services				10,209.40
<b>Total Purchased Professional and Technical Services</b>				<b>\$10,209.40</b>
<b>500 <u>Other Purchased Services</u></b>				
580 Travel				1,143.80
<b>Total Other Purchased Services</b>				<b>\$1,143.80</b>
<b>Total 2836 Staff Development Services – Non-Instructional, Non-Certified Staff Only</b>				<b>\$11,353.20</b>

General Fund (10)

2900 Other Support Services

Elementary

Secondary

Federal

Total

500 Other Purchased Services

595 IU Payments By Withholding

5,640.90

**Total Other Purchased Services**

**\$5,640.90**

**Total 2900 Other Support Services**

**\$5,640.90**

General Fund (10)

2910 Support Services Not Listed Elsewhere In the 2000 Series

Elementary

Secondary

Federal

Total

500 Other Purchased Services

595 IU Payments By Withholding

5,640.90

**Total Other Purchased Services**

**\$5,640.90**

**Total 2910 Support Services Not Listed Elsewhere In the 2000 Series**

**\$5,640.90**



**General Fund (10)**

**3000 Operation of Non-Instructional Services**

**Total**

**100 Personnel Services – Salaries**

100 Personnel Services – Salaries 548,328.09

**Total Personnel Services – Salaries \$548,328.09**

**200 Personnel Services – Employee Benefits**

210 Group Insurance – Contracted Provider 11.95

220 Social Security Contributions 41,366.53

230 PSERS Retirement Contributions 178,152.57

250 Unemployment Compensation 1,098.74

260 Workers' Compensation 2,623.82

270 Group Insurance – Self-Insurance 8,897.05

291 Other Retirement Plans 1,708.20

**Total Personnel Services – Employee Benefits \$233,858.86**

**300 Purchased Professional and Technical Services**

330 Other Professional Services 33,344.54

390 Other Purchased Professional and Technical Services 71,818.34

**Total Purchased Professional and Technical Services \$105,162.88**

**400 Purchased Property Services**

430 Repairs and Maintenance Services 1,201.45

440 Rentals 5,950.20

**Total Purchased Property Services \$7,151.65**

**500 Other Purchased Services**

510 Student Transportation Services 104,750.28

520 Insurance – General 7,790.00

550 Printing and Binding 6,315.83

580 Travel 5,126.21

**Total Other Purchased Services \$123,982.32**

**600 Supplies**

610 General Supplies 79,119.09

630 Food 1,936.03

650 Supplies & Fees – Technology Related 17,600.00

**Total Supplies \$98,655.12**

**700 Property**

756 Capitalized Technology Equipment – Original 21,932.07

762 Capitalized Equipment - Replacement 7,819.00

**Total Property \$29,751.07**

**800 Other Objects**

810 Dues and Fees 3,279.50

890 Miscellaneous Expenditures 10,464.00

**Total Other Objects \$13,743.50**

**Total 3000 Operation of Non-Instructional Services \$1,160,633.49**

**General Fund (10)**

**3200 Student Activities**

Elementary                      Secondary                      Federal                      Total

<b>100</b>	<b><u>Personnel Services – Salaries</u></b>				
	100 Personnel Services – Salaries				548,328.09
<b>Total Personnel Services – Salaries</b>					<b>\$548,328.09</b>
<b>200</b>	<b><u>Personnel Services – Employee Benefits</u></b>				
	210 Group Insurance – Contracted Provider				11.95
	220 Social Security Contributions				41,366.53
	230 PSERS Retirement Contributions				178,152.57
	250 Unemployment Compensation				1,098.74
	260 Workers' Compensation				2,623.82
	270 Group Insurance – Self-Insurance				8,897.05
	291 Other Retirement Plans				1,708.20
<b>Total Personnel Services – Employee Benefits</b>					<b>\$233,858.86</b>
<b>300</b>	<b><u>Purchased Professional and Technical Services</u></b>				
	330 Other Professional Services				33,344.54
	390 Other Purchased Professional and Technical Services				71,818.34
<b>Total Purchased Professional and Technical Services</b>					<b>\$105,162.88</b>
<b>400</b>	<b><u>Purchased Property Services</u></b>				
	430 Repairs and Maintenance Services				1,201.45
	440 Rentals				5,950.20
<b>Total Purchased Property Services</b>					<b>\$7,151.65</b>
<b>500</b>	<b><u>Other Purchased Services</u></b>				
	510 Student Transportation Services				104,750.28
	520 Insurance – General				7,790.00
	550 Printing and Binding				1,369.67
	580 Travel				5,126.21
<b>Total Other Purchased Services</b>					<b>\$119,036.16</b>
<b>600</b>	<b><u>Supplies</u></b>				
	610 General Supplies				76,567.07
	630 Food				1,936.03
	650 Supplies & Fees – Technology Related				17,600.00
<b>Total Supplies</b>					<b>\$96,103.10</b>
<b>700</b>	<b><u>Property</u></b>				
	756 Capitalized Technology Equipment – Original				21,932.07
	762 Capitalized Equipment - Replacement				7,819.00
<b>Total Property</b>					<b>\$29,751.07</b>
<b>800</b>	<b><u>Other Objects</u></b>				
	810 Dues and Fees				3,279.50
	890 Miscellaneous Expenditures				10,464.00
<b>Total Other Objects</b>					<b>\$13,743.50</b>
<b>Total 3200 Student Activities</b>					<b>\$1,153,135.31</b>

General Fund (10)

3300 Community Services

Elementary

Secondary

Federal

Total

500 Other Purchased Services

550 Printing and Binding

4,946.16

**Total Other Purchased Services**

**\$4,946.16**

600 Supplies

610 General Supplies

2,552.02

**Total Supplies**

**\$2,552.02**

**Total 3300 Community Services**

**\$7,498.18**

**General Fund (10)**

**5000 Other Expenditures and Financing Uses**

**Total**

**800 Other Objects**

880 Refunds of Prior Years' Receipts

(1,984.08)

**Total Other Objects**

**(\$1,984.08)**

**900 Other Uses of Funds**

932 Capital Reserve Fund Transfers Applicable To Fund 32

300,000.00

939 Other Fund Transfers

6,200,791.38

**Total Other Uses of Funds**

**\$6,500,791.38**

**Total 5000 Other Expenditures and Financing Uses**

**\$6,498,807.30**

General Fund (10)

5100 Debt Service / Other Expenditures and Financing Uses	<u>Elementary</u>	<u>Secondary</u>	<u>Federal</u>	<u>Total</u>
800 <u>Other Objects</u>				
880 Refunds of Prior Years' Receipts				(1,984.08)
<b>Total Other Objects</b>				<b>(\$1,984.08)</b>
<b>Total 5100 Debt Service / Other Expenditures and Financing Uses</b>				<b>(\$1,984.08)</b>

General Fund (10)

5130 Refund of Prior Year Revenues / Receipts

Elementary

Secondary

Federal

Total

800 Other Objects

880 Refunds of Prior Years' Receipts

(1,984.08)

**Total Other Objects**

**(\$1,984.08)**

**Total 5130 Refund of Prior Year Revenues / Receipts**

**(\$1,984.08)**

General Fund (10)

5200 Interfund Transfers – Out

Elementary

Secondary

Federal

Total

900 Other Uses of Funds

932 Capital Reserve Fund Transfers Applicable To Fund 32

300,000.00

939 Other Fund Transfers

6,200,791.38

**Total Other Uses of Funds**

**\$6,500,791.38**

**Total 5200 Interfund Transfers – Out**

**\$6,500,791.38**

LEA : 112679403 York Suburban SD

Printed 1/17/2025 11:15:28 AM

General Fund (10)

5230 Capital Projects Fund Transfers

Elementary

Secondary

Federal

Total

900 Other Uses of Funds

932 Capital Reserve Fund Transfers Applicable To Fund 32

300,000.00

**Total Other Uses of Funds**

**\$300,000.00**

**Total 5230 Capital Projects Fund Transfers**

**\$300,000.00**



General Fund (10)

5240 Debt Service Fund Transfers

Elementary

Secondary

Federal

Total

900 Other Uses of Funds

939 Other Fund Transfers

6,193,280.97

**Total Other Uses of Funds**

**\$6,193,280.97**

**Total 5240 Debt Service Fund Transfers**

**\$6,193,280.97**

General Fund (10)

5250 Enterprise Fund Transfers

Elementary

Secondary

Federal

Total

900 Other Uses of Funds

939 Other Fund Transfers

7,510.41

**Total Other Uses of Funds**

**\$7,510.41**

**Total 5250 Enterprise Fund Transfers**

**\$7,510.41**

LEA : 112679403 York Suburban SD

Printed 1/17/2025 11:15:19 AM

**Student Sponsored Activity Fund (21)**

**3000 Operation of Non-Instructional Services**

**Total**

**300 Purchased Professional and Technical Services**

330 Other Professional Services 11,350.00

**Total Purchased Professional and Technical Services \$11,350.00**

**400 Purchased Property Services**

440 Rentals 1,989.00

**Total Purchased Property Services \$1,989.00**

**500 Other Purchased Services**

530 Communications 48.15

550 Printing and Binding 1,197.00

580 Travel 15,282.16

**Total Other Purchased Services \$16,527.31**

**600 Supplies**

610 General Supplies 25,692.15

630 Food 4,035.23

**Total Supplies \$29,727.38**

**800 Other Objects**

810 Dues and Fees 28,122.32

890 Miscellaneous Expenditures 1,632.50

**Total Other Objects \$29,754.82**

**Total 3000 Operation of Non-Instructional Services \$89,348.51**



**Capital Reserve Fund - § 1431 (32)**

**4000 Facilities Acquisition, Construction and Improvement Services**

**Total**

**300 Purchased Professional and Technical Services**

330 Other Professional Services

13,800.00

**Total Purchased Professional and Technical Services**

**\$13,800.00**

**Total 4000 Facilities Acquisition, Construction and Improvement Services**

**\$13,800.00**

Capital Reserve Fund - § 1431 (32)

4500 Building Acquisition and Construction Services – Original and Additional

Elementary

Secondary

Federal

Total

300 Purchased Professional and Technical Services

330 Other Professional Services

10,800.00

**Total Purchased Professional and Technical Services**

**\$10,800.00**

**Total 4500 Building Acquisition and Construction Services – Original and Additional**

**\$10,800.00**

LEA : 112679403 York Suburban SD

Printed 1/17/2025 11:15:22 AM

Capital Reserve Fund - § 1431 (32)

4600 Existing Building Improvement Services

Elementary

Secondary

Federal

Total

300 Purchased Professional and Technical Services

330 Other Professional Services

3,000.00

**Total Purchased Professional and Technical Services**

**\$3,000.00**

**Total 4600 Existing Building Improvement Services**

**\$3,000.00**

**Other Capital Projects Fund (39)**

**2000 Support Services**

**700 Property**

752 Capital Equipment – Original and Additional

164,138.59

762 Capitalized Equipment - Replacement

18,568.35

**Total Property** **\$182,706.94**

**Total 2000 Support Services** **\$182,706.94**



Other Capital Projects Fund (39)

2600 Operation and Maintenance of Plant Services

Elementary

Secondary

Federal

Total

700 Property

752 Capital Equipment – Original and Additional

94,513.59

762 Capitalized Equipment - Replacement

18,568.35

<b>Total Property</b>				<b>\$113,081.94</b>
<b>Total 2600 Operation and Maintenance of Plant Services</b>				<b>\$113,081.94</b>

Other Capital Projects Fund (39)

2620 Operation of Buildings Services

Elementary

Secondary

Federal

Total

700 Property

752 Capital Equipment – Original and Additional

94,513.59

762 Capitalized Equipment - Replacement

18,568.35

**Total Property** **\$113,081.94**

**Total 2620 Operation of Buildings Services** **\$113,081.94**

LEA : 112679403 York Suburban SD

Printed 1/17/2025 11:15:10 AM

Other Capital Projects Fund (39)

2700 Student Transportation Services

Elementary

Secondary

Federal

Total

700 Property

752 Capital Equipment – Original and Additional

69,625.00

**Total Property**

**\$69,625.00**

**Total 2700 Student Transportation Services**

**\$69,625.00**

Other Capital Projects Fund (39)

2720 Vehicle Operation Services

Elementary

Secondary

Federal

Total

700 Property

752 Capital Equipment – Original and Additional

69,625.00

**Total Property**

**\$69,625.00**

**Total 2720 Vehicle Operation Services**

**\$69,625.00**

**Other Capital Projects Fund (39)**

**4000 Facilities Acquisition, Construction and Improvement Services**

**Total**

**300 Purchased Professional and Technical Services**

330 Other Professional Services

1,057,889.41

**Total Purchased Professional and Technical Services**

**\$1,057,889.41**

**400 Purchased Property Services**

450 Construction Services

1,236,824.09

**Total Purchased Property Services**

**\$1,236,824.09**

**Total 4000 Facilities Acquisition, Construction and Improvement Services**

**\$2,294,713.50**

Other Capital Projects Fund (39)

4500 Building Acquisition and Construction Services – Original and Additional

Elementary

Secondary

Federal

Total

300 Purchased Professional and Technical Services

330 Other Professional Services

951,395.49

**Total Purchased Professional and Technical Services**

**\$951,395.49**

**Total 4500 Building Acquisition and Construction Services – Original and Additional**

**\$951,395.49**

**Other Capital Projects Fund (39)**

**4600 Existing Building Improvement Services**

Elementary

Secondary

Federal

Total

**300 Purchased Professional and Technical Services**

330 Other Professional Services

106,493.92

**Total Purchased Professional and Technical Services**

**\$106,493.92**

**400 Purchased Property Services**

450 Construction Services

1,236,824.09

**Total Purchased Property Services**

**\$1,236,824.09**

**Total 4600 Existing Building Improvement Services**

**\$1,343,318.01**

LEA : 112679403 York Suburban SD

Printed 1/17/2025 11:15:14 AM

**Debt Service Fund (40)**

**2000 Support Services**

**800 Other Objects**

810 Dues and Fees

265,246.84

**Total Other Objects**

**\$265,246.84**

**Total 2000 Support Services**

**\$265,246.84**



LEA : 112679403 York Suburban SD

Printed 1/17/2025 11:15:14 AM

Debt Service Fund (40)

2300 Support Services – Administration

Elementary

Secondary

Federal

Total

800 Other Objects

810 Dues and Fees

265,246.84

**Total Other Objects**

**\$265,246.84**

**Total 2300 Support Services – Administration**

**\$265,246.84**

LEA : 112679403 York Suburban SD

Printed 1/17/2025 11:15:14 AM

Debt Service Fund (40)

2390 Other Administration Services

Elementary

Secondary

Federal

Total

800 Other Objects

810 Dues and Fees

265,246.84

**Total Other Objects**

**\$265,246.84**

**Total 2390 Other Administration Services**

**\$265,246.84**

**Debt Service Fund (40)**

**5000 Other Expenditures and Financing Uses**

**Total**

**800 Other Objects**

830 Interest 1,170,947.97

**Total Other Objects \$1,170,947.97**

**900 Other Uses of Funds**

910 Redemption of Principal 4,087,000.00

990 Miscellaneous Other Uses of Funds 161,383.55

**Total Other Uses of Funds \$4,248,383.55**

**Total 5000 Other Expenditures and Financing Uses \$5,419,331.52**

Debt Service Fund (40)

5100 Debt Service / Other Expenditures and Financing Uses

Elementary

Secondary

Federal

Total

800 Other Objects

830 Interest 1,170,947.97

**Total Other Objects**

**\$1,170,947.97**

900 Other Uses of Funds

910 Redemption of Principal 4,087,000.00

990 Miscellaneous Other Uses of Funds 161,383.55

**Total Other Uses of Funds**

**\$4,248,383.55**

**Total 5100 Debt Service / Other Expenditures and Financing Uses**

**\$5,419,331.52**

Debt Service Fund (40)

	<u>Elementary</u>	<u>Secondary</u>	<u>Federal</u>	<u>Total</u>
<b>5110 Debt Service</b>				
<b>800 Other Objects</b>				
830 Interest				1,170,947.97
<b>Total Other Objects</b>				<b>\$1,170,947.97</b>
<b>900 Other Uses of Funds</b>				
910 Redemption of Principal				4,087,000.00
<b>Total Other Uses of Funds</b>				<b>\$4,087,000.00</b>
<b>Total 5110 Debt Service</b>				<b>\$5,257,947.97</b>

Debt Service Fund (40)

5150 Bond Discounts

Elementary

Secondary

Federal

Total

900 Other Uses of Funds

990 Miscellaneous Other Uses of Funds

161,383.55

**Total Other Uses of Funds**

**\$161,383.55**

**Total 5150 Bond Discounts**

**\$161,383.55**

	<u>General Fund(10)</u>	<u>Student Sponsored Activity Fund(21)</u>	<u>Public Purpose Trust(27)</u>	<u>Other Compt Approved (28)</u>	<u>Athletic / Activity(29)</u>
<b>1000 Instruction</b>					
1100 Regular Programs - Elementary / Secondary	31,469,111.70				
1200 Special Programs - Elementary / Secondary	11,303,773.95				
1300 Vocational Education	1,321,277.50				
1400 Other Instructional Programs - Elementary / Secondary	78,521.28				
1500 Nonpublic School Programs	11,787.00				
1700 Higher Education Programs for Secondary Students	26,048.18				
<b>Total Instruction</b>	<b>\$44,210,519.61</b>				
<b>2000 Support Services</b>					
2100 Support Services - Students	2,754,801.93				
2200 Support Services - Instructional Staff	2,310,140.99				
2300 Support Services - Administration	4,148,626.80				
2400 Support Services - Pupil Health	841,289.37				
2500 Support Services - Business	951,531.21				
2600 Operation and Maintenance of Plant Services	4,201,627.76				
2700 Student Transportation Services	2,803,545.20				
2800 Support Services - Central	417,292.37				
2900 Other Support Services	5,640.90				
<b>Total Support Services</b>	<b>\$18,434,496.53</b>				
<b>3000 Operation of Non-Instructional Services</b>					
3200 Student Activities	1,153,135.31	89,348.51			
3300 Community Services	7,498.18				
<b>Total Operation of Non-Instructional Services</b>	<b>\$1,160,633.49</b>	<b>\$89,348.51</b>			
<b>4000 Facilities Acquisition, Construction and Improvement Services</b>					
4500 Building Acquisition and Construction Services - Original and Additional					
4600 Existing Building Improvement Services					
<b>Total Facilities Acquisition, Construction and Improvement Services</b>					
<b>5000 Other Expenditures and Financing Uses</b>					
5100 Debt Service / Other Expenditures and Financing Uses	(1,984.08)				
5200 Interfund Transfers - Out	6,500,791.38				
<b>Total Other Expenditures and Financing Uses</b>	<b>\$6,498,807.30</b>				
<b>TOTAL ACTUAL EXPENDITURES &amp; OTHER FINANCING USES</b>	<b>\$70,304,456.93</b>	<b>\$89,348.51</b>			

	<u>Capital Reserve (690.1850)(31)</u>	<u>Capital Reserve (1431)(32)</u>	<u>Other Capital Projects Fund(39)</u>	<u>Debt Service(40)</u>	<u>Permanent(90)</u>
<b>1000 Instruction</b>					
1100 Regular Programs - Elementary / Secondary					
1200 Special Programs - Elementary / Secondary					
1300 Vocational Education					
1400 Other Instructional Programs - Elementary / Secondary					
1500 Nonpublic School Programs					
1700 Higher Education Programs for Secondary Students					
<b>Total Instruction</b>					
<b>2000 Support Services</b>					
2100 Support Services - Students					
2200 Support Services - Instructional Staff					
2300 Support Services - Administration				265,246.84	
2400 Support Services - Pupil Health					
2500 Support Services - Business					
2600 Operation and Maintenance of Plant Services			113,081.94		
2700 Student Transportation Services			69,625.00		
2800 Support Services - Central					
2900 Other Support Services					
<b>Total Support Services</b>			<b>\$182,706.94</b>	<b>\$265,246.84</b>	
<b>3000 Operation of Non-Instructional Services</b>					
3200 Student Activities					
3300 Community Services					
<b>Total Operation of Non-Instructional Services</b>					
<b>4000 Facilities Acquisition, Construction and Improvement Services</b>					
4500 Building Acquisition and Construction Services - Original and Additional		10,800.00	951,395.49		
4600 Existing Building Improvement Services		3,000.00	1,343,318.01		
<b>Total Facilities Acquisition, Construction and Improvement Services</b>		<b>\$13,800.00</b>	<b>\$2,294,713.50</b>		
<b>5000 Other Expenditures and Financing Uses</b>					
5100 Debt Service / Other Expenditures and Financing Uses				5,419,331.52	
5200 Interfund Transfers - Out					
<b>Total Other Expenditures and Financing Uses</b>				<b>\$5,419,331.52</b>	
<b>TOTAL ACTUAL EXPENDITURES &amp; OTHER FINANCING USES</b>		<b>\$13,800.00</b>	<b>\$2,477,420.44</b>	<b>\$5,684,578.36</b>	



**Total**

<b>1000 <u>Instruction</u></b>	
1100 Regular Programs - Elementary / Secondary	31,469,111.70
1200 Special Programs - Elementary / Secondary	11,303,773.95
1300 Vocational Education	1,321,277.50
1400 Other Instructional Programs - Elementary / Secondary	78,521.28
1500 Nonpublic School Programs	11,787.00
1700 Higher Education Programs for Secondary Students	26,048.18
<b>Total Instruction</b>	<b>\$44,210,519.61</b>
<b>2000 <u>Support Services</u></b>	
2100 Support Services - Students	2,754,801.93
2200 Support Services - Instructional Staff	2,310,140.99
2300 Support Services - Administration	4,413,873.64
2400 Support Services - Pupil Health	841,289.37
2500 Support Services - Business	951,531.21
2600 Operation and Maintenance of Plant Services	4,314,709.70
2700 Student Transportation Services	2,873,170.20
2800 Support Services - Central	417,292.37
2900 Other Support Services	5,640.90
<b>Total Support Services</b>	<b>\$18,882,450.31</b>
<b>3000 <u>Operation of Non-Instructional Services</u></b>	
3200 Student Activities	1,242,483.82
3300 Community Services	7,498.18
<b>Total Operation of Non-Instructional Services</b>	<b>\$1,249,982.00</b>
<b>4000 <u>Facilities Acquisition, Construction and Improvement Services</u></b>	
4500 Building Acquisition and Construction Services - Original and Additional	962,195.49
4600 Existing Building Improvement Services	1,346,318.01
<b>Total Facilities Acquisition, Construction and Improvement Services</b>	<b>\$2,308,513.50</b>
<b>5000 <u>Other Expenditures and Financing Uses</u></b>	
5100 Debt Service / Other Expenditures and Financing Uses	5,417,347.44
5200 Interfund Transfers - Out	6,500,791.38
<b>Total Other Expenditures and Financing Uses</b>	<b>\$11,918,138.82</b>
<b>TOTAL ACTUAL EXPENDITURES &amp; OTHER FINANCING USES</b>	<b>\$78,569,604.24</b>

LEA : 112679403 York Suburban SD

Printed 1/17/2025 11:15:46 AM

**PSERS Salary Data (Salary Data should relate to the General Fund only)**

<b>Amount Description</b>	<b>Amount</b>
Total Salary Base for salaries subject to PSERS withholding	26,963,244.22
Total Federally Funded salaries subject to PSERS withholding	888,224.31
	<hr/>

**Title I Expenditure Data**

<b>Amount Description</b>	<b>Amount</b>
Expenditures Funded with Current Title I Funds	434,766.00
Expenditures Funded with Carry over Title I Funds	1,615.00
	<hr/>
<b>Total Title I Expenditure Data</b>	<b>\$436,381.00</b>
	<hr/>

**Title IV Revenue Data**

<b>Amount Description</b>	<b>Amount</b>
Revenue from Title IV-A-1: Student Support and Academic Enrichment Grants	12,463.30
	<hr/>

1 .	<u><b>Current Special Education Expenditures within Function 1000</b></u> See list of exclusions in the note below.	7,746,886.91
2 .	<u><b>Current Special Education Expenditures within Function 2000</b></u> See list of exclusions in the note below.	3,436,215.42
2A.	<u><b>Current Special Education Expenditures within Sub-Function 2100</b></u> This data should also be included in line 2 above. See list of exclusions in the note below.	2,754,801.93
2B.	<u><b>Current Special Education Expenditures within Sub-Function 2200</b></u> This data should also be included in line 2 above. See list of exclusions in the note below.	
2C.	<u><b>Current Special Education Expenditures within Sub-Function 2700</b></u> This data should also be included in line 2 above. See list of exclusions in the note below.	
3.	<u><b>Current Special Education Expenditures within Sub-Function 3100</b></u> See list of exclusions in the note below.	
4.	<u><b>Current Special Education Expenditures within Sub-Function 3200</b></u> See list of exclusions in the note below.	

**Note: The Current Special Education Expenditure amounts for each line should be calculated as follows:**

- \* Include the total expenditures for special education costs from all governmental funds and the food service fund 51 for the function/sub-function requested
- \* Exclude data from sub-functions: 1243,1450,1500,1600,1807,2280,2450,2750,2990
- \* Exclude data from objects: 322,511,512,516,561,562,564,566,592,593,594,595,596,597,700,830,899

**Benefits for Staff Relative to Collective Bargaining Agreements**

	OBJECT	COVERED	NOT COVERED	TOTAL
<b>10 General Fund</b>				
	211 Medical Insurance			
	212 Dental Insurance			
	215 Eye Care Insurance			
	216 Prescription Insurance			
	271 Self-Insurance Medical Benefits	5,296,559.18	167,490.52	5,464,049.70
	272 Self-Insurance Dental Benefits	321,977.77	23,723.37	345,701.14
	275 Self-Insurance Eye Care Benefits			
	276 Self-Insurance Prescription Benefits			
	<b>FUND TOTAL</b>		<b>\$5,618,536.95</b>	<b>\$191,213.89</b>
<b>50 Enterprise Fund</b>	No Self Insurance data to report			
	211 Medical Insurance			
	212 Dental Insurance			
	215 Eye Care Insurance			
	216 Prescription Insurance			
	271 Self-Insurance Medical Benefits			
	272 Self-Insurance Dental Benefits			
	275 Self-Insurance Eye Care Benefits			
	276 Self-Insurance Prescription Benefits			
	<b>FUND TOTAL</b>			
<b>60 Internal Service Fund</b>	No Self Insurance data to report			
	211 Medical Insurance			
	212 Dental Insurance			
	215 Eye Care Insurance			
	216 Prescription Insurance			
	271 Self-Insurance Medical Benefits			
	272 Self-Insurance Dental Benefits			
	275 Self-Insurance Eye Care Benefits			
	276 Self-Insurance Prescription Benefits			
	<b>FUND TOTAL</b>			
<b>Total of All Funds</b>		<b>\$5,618,536.95</b>	<b>\$191,213.89</b>	<b>\$5,809,750.84</b>

LEA : 112679403 York Suburban SD

Printed 1/17/2025 11:15:52 AM

Function	Special Education (Prior Year)	Nonspecial Education (Prior Year)	Total (Prior Year)	Special Education (Current Year)	Nonspecial Education (Current Year)	Total (Current Year)
2120 Guidance Services	241,518.87	1,545,044.48	1,786,563.35	242,725.65	1,553,911.31	1,796,636.96
2140 Psychological Services	356,779.95	89,194.99	445,974.94	373,680.84	82,027.50	455,708.34
2150 Speech Pathology and Audiology Services						
2160 Social Work Services		287,969.73	287,969.73		349,112.99	349,112.99
2260 Instruction and Curriculum Development Services	86,146.02	488,160.73	574,306.75	104,159.80	648,323.82	752,483.62
2350 Legal and Accounting Services	48,882.11	44,388.47	93,270.58	48,125.10	30,100.26	78,225.36
2420 Medical Services						
2440 Nursing Services	85,417.17	483,280.72	568,697.89	106,684.56	564,287.49	670,972.05
2700 Student Transportation Services	523,817.03	1,764,055.33	2,287,872.36	538,931.45	1,697,298.64	2,236,230.09
<b>Total</b>	<b>\$1,342,561.15</b>	<b>\$4,702,094.45</b>	<b>\$6,044,655.60</b>	<b>\$1,414,307.40</b>	<b>\$4,925,062.01</b>	<b>\$6,339,369.41</b>

(PRINCIPAL AMOUNTS ONLY)

**GOVERNMENTAL FUNDS/ ACTIVITIES**

	Short-Term Borrowing	General Obligation Bonds/Notes	Authority Building Obligations	Leases, Other Right to Use Arrangements	Extended Term Financing Agreements	Other Long Term Debt/Liabilities	OPEB, Comp Abs, Net Pension Liab	Total
1. Debt at Beginning of Fiscal Year		31,703,384.63					86,829,780.00	118,533,164.63
2. Additional Debt Incurred During Year		19,574,615.00					1,523,592.00	21,098,207.00
3. Retirements and Repayments		3,727,000.00					683,843.00	4,410,843.00
4. Debt at End of Fiscal Year		47,550,999.63					87,669,529.00	135,220,528.63
5. Accreted Interest at End Of Fiscal Year								
6. Total Debt and Accreted Interest		47,550,999.63					87,669,529.00	135,220,528.63
7. Current Portion P&I - Due within 1 year		5,357,493.20						5,357,493.20
8. Interest Paid during current fiscal year		1,275,492.68						1,275,492.68

(PRINCIPAL AMOUNTS ONLY)

**PROPRIETARY FUNDS**

- 1. Debt at Beginning of Fiscal Year
- 2. Additional Debt Incurred During Year
- 3. Retirements and Repayments
- 4. Debt at End of Fiscal Year
- 5. Accreted Interest at End Of Fiscal Year
- 6. Total Debt and Accreted Interest
- 7. Current Portion P&I - Due within 1 year
- 8. Interest Paid during current fiscal year

**Total Principal and Interest Payments Made by Your School - All Funds**

Function	Fund		Principal (910)	Principal (920)	Interest (830)	Total (Principal +Interest)	Misc Other Uses (990)
5110	10	General Fund					
5110	20	Special Revenue Funds					
5110	30	Capital Projects Funds					
5110	40	Debt Service Fund	4,087,000.00		1,170,947.97	5,257,947.97	
5110	90	Permanent Fund					
5120	10	General Fund					
5120	20	Special Revenue Funds					
5120	30	Capital Projects Funds					
5120	40	Debt Service Fund					
5140	10	General Fund					
5140	20	Special Revenue Funds					
5140	30	Capital Projects Funds					
5140	40	Debt Service Fund					
5140	90	Permanent Fund					
<b>Total Debt Payments - Governmental Funds</b>			<b>\$4,087,000.00</b>		<b>\$1,170,947.97</b>	<b>\$5,257,947.97</b>	

Function	Fund		Principal (910)	Principal (920)	Interest (830)	Total (Principal +Interest)
5110	50	Enterprise Fund				
5110	60	Internal Service Fund				
5120	50	Enterprise Fund				
5120	60	Internal Service Fund				
5140	50	Enterprise Fund				
5140	60	Internal Service Fund				
<b>Total Debt Payments - Proprietary Funds</b>						

**Debt Details**  
**Governmental Funds/ Activities**

Debt Category	Debt Issue Date (MM/YYYY)	Principal Amounts Only				Debt at End of Fiscal Year	Current Portion Due Within One Year (Principal and Interest)	Interest Paid During Fiscal Year
		Debt at Beginning of Fiscal Year	Additions	Reductions / Repayments				
General Obligation Bonds/Notes – CIB	05/2023		19,574,615.00		19,574,615.00	489,775.00	484,775.00	
General Obligation Bonds/Notes – CIB	11/2020	9,430,000.00		122,000.00	9,308,000.00	259,347.20	137,347.20	
General Obligation Bonds/Notes – CIB	10/2019	10,713,384.63		3,560,000.00	7,153,384.63	3,786,250.00	226,250.00	
General Obligation Bonds/Notes – CIB	05/2019	9,485,000.00		5,000.00	9,480,000.00	376,165.00	371,165.00	
General Obligation Bonds/Notes – CIB	03/2016	2,075,000.00		40,000.00	2,035,000.00	445,956.00	55,955.48	
Compensated Absences		1,447,215.00		672,843.00	774,372.00			
Net Pension Liability		79,492,195.00	1,294,805.00		80,787,000.00			
Other Post-Employment Benefits (OPEB)		5,890,370.00	228,787.00	11,000.00	6,108,157.00			
<b>Totals for Debt Entered:</b>		<b>\$118,533,164.63</b>	<b>\$21,098,207.00</b>	<b>\$4,410,843.00</b>	<b>\$135,220,528.63</b>	<b>\$5,357,493.20</b>	<b>\$1,275,492.68</b>	



**General Fund (10)**

**Section 1: Tuition/Purchased Services as Reported within Expenditure Detail**

	Amount
Tuition Reported in General Fund Expenditures 1000-560	5,015,896.40
Purchased Services in General Fund Expenditures 1000-594 and 1000-597	
<b>Section 1 Total</b>	<b>\$5,015,896.40</b>

**Section 2: Tuition Paid to Institution Types During Fiscal Year**

	Tuition Paid For Nonspecial Education	Tuition Paid For Special Education	Total
1 1306 Institutions	31,195.65	63,508.72	94,704.37
2 Institutionalized Children's Programs			
3 Juveniles Incarcerated in Adult Facilities			
4 Residential Treatment Facilities			
5 Other Local Education Agencies			
6 Brick and Mortar Charter Schools	1,454,413.43	497,347.99	1,951,761.42
7 Cyber Charter Schools	641,201.29	534,537.03	1,175,738.32
8 Career and Technology Centers	575,689.13	1,005,537.17	1,581,226.30
9 Approved Private Schools			
10 PA Chartered Schools for the Deaf and Blind			
11 Private Residential Rehabilitative Institutions		212,465.99	212,465.99
12 Juvenile Detention Centers			
13 Special Program Jointures			
14 Other Tuition Not Included Elsewhere In This Section			
<b>Section 2 Total</b>	<b>\$2,702,499.50</b>	<b>\$2,313,396.90</b>	<b>\$5,015,896.40</b>

**Food Service / Cafeteria Operations Fund (51)**

**3000 Operation of Non-Instructional Services**

**Total**

**300 Purchased Professional and Technical Services**

330 Other Professional Services 1,626.00

**Total Purchased Professional and Technical Services \$1,626.00**

**500 Other Purchased Services**

570 Food Service Management 1,871,904.00

**Total Other Purchased Services \$1,871,904.00**

**600 Supplies**

610 General Supplies 109,336.00

630 Food 164,148.00

650 Supplies & Fees – Technology Related 4,940.00

**Total Supplies \$278,424.00**

**700 Property**

740 Depreciation 30,709.00

**Total Property \$30,709.00**

**Total 3000 Operation of Non-Instructional Services \$2,182,663.00**

**Food Service / Cafeteria Operations Fund (51)**

	<u>Elementary</u>	<u>Secondary</u>	<u>Federal</u>	<u>Total</u>
<b>3100 Food Services</b>				
<b>300 <u>Purchased Professional and Technical Services</u></b>				
330 Other Professional Services				1,626.00
<b>Total Purchased Professional and Technical Services</b>				<b>\$1,626.00</b>
<b>500 <u>Other Purchased Services</u></b>				
570 Food Service Management				1,871,904.00
<b>Total Other Purchased Services</b>				<b>\$1,871,904.00</b>
<b>600 <u>Supplies</u></b>				
610 General Supplies				109,336.00
630 Food				164,148.00
650 Supplies & Fees – Technology Related				4,940.00
<b>Total Supplies</b>				<b>\$278,424.00</b>
<b>700 <u>Property</u></b>				
740 Depreciation				30,709.00
<b>Total Property</b>				<b>\$30,709.00</b>
<b>Total 3100 Food Services</b>				<b>\$2,182,663.00</b>

**Internal Service Fund (60)**

<b>1000 Instruction</b>	<u><b>Total</b></u>
<b>200 <u>Personnel Services – Employee Benefits</u></b>	
270 Group Insurance – Self-Insurance	6,279,363.00
<b>Total Personnel Services – Employee Benefits</b>	<b>\$6,279,363.00</b>
<b>800 <u>Other Objects</u></b>	
810 Dues and Fees	116,380.00
<b>Total Other Objects</b>	<b>\$116,380.00</b>
<b>Total 1000 Instruction</b>	<b>\$6,395,743.00</b>

Internal Service Fund (60)

1100 Regular Programs – Elementary / Secondary

Elementary

Secondary

Federal

Total

200 Personnel Services – Employee Benefits

270 Group Insurance – Self-Insurance

6,279,363.00

**Total Personnel Services – Employee Benefits**

**\$6,279,363.00**

800 Other Objects

810 Dues and Fees

116,380.00

**Total Other Objects**

**\$116,380.00**

**Total 1100 Regular Programs – Elementary / Secondary**

**\$6,395,743.00**

Internal Service Fund (60)

1110 Regular Programs

Elementary

Secondary

Federal

Total

200 Personnel Services – Employee Benefits

270 Group Insurance – Self-Insurance

6,279,363.00

**Total Personnel Services – Employee Benefits**

**\$6,279,363.00**

800 Other Objects

810 Dues and Fees

116,380.00

**Total Other Objects**

**\$116,380.00**

**Total 1110 Regular Programs**

**\$6,395,743.00**

	<u>Food Service(51)</u>	<u>Child Care Operations(52)</u>	<u>Other Enterprise(58)</u>	<u>Internal Service(60)</u>	<u>Total</u>
<b>1000 Instruction</b>					
1100 Regular Programs - Elementary / Secondary				6,395,743.00	6,395,743.00
<b>Total Instruction</b>				<b>\$6,395,743.00</b>	<b>\$6,395,743.00</b>
<b>3000 Operation of Non-Instructional Services</b>					
3100 Food Services	2,182,663.00				2,182,663.00
<b>Total Operation of Non-Instructional Services</b>	<b>\$2,182,663.00</b>				<b>\$2,182,663.00</b>
<b>TOTAL ACTUAL EXPENDITURES &amp; OTHER FINANCING USES</b>	<b>\$2,182,663.00</b>			<b>\$6,395,743.00</b>	<b>\$8,578,406.00</b>

LEA : 112679403 York Suburban SD

Printed 1/17/2025 11:16:12 AM

Fund	School	School Number	Local Personnel	Local Nonpersonnel	State Personnel	State Nonpersonnel	Federal Personnel	Federal Nonpersonnel	Total	Explanation
10										
	East York El Sch	4648	3,265,861.10	219,009.98	1,130,049.00	3,250.00	197,451.05	3,314.04	4,818,935.17	
	Indian Rock El Sch	6688	3,246,143.36	223,483.94	1,131,951.17	5,757.00	25,145.05	3,664.50	4,636,145.02	
	Valley View El Sch	4653	3,292,544.08	169,553.37	1,138,588.79	2,551.68	63,749.60	3,516.02	4,670,503.54	
	York Suburban MS	4657	7,275,389.37	497,567.87	2,510,016.13	6,241.63	109,129.52	7,715.52	10,406,060.04	
	York Suburban SHS	4658	9,167,143.25	2,449,000.07	3,169,602.84	4,201.84	8,700.49	10,157.20	14,808,805.69	
	Yorkshire El Sch	8179	3,319,089.61	214,807.97	1,297,713.06	852.24	244,733.59	1,383.09	5,078,579.56	
<b>Total</b>			<b>29,566,170.77</b>	<b>3,773,423.20</b>	<b>10,377,920.99</b>	<b>22,854.39</b>	<b>648,909.30</b>	<b>29,750.37</b>	<b>44,419,029.02</b>	